



ARTISAN DOORS
2020



CHOOSE YOUR Product

Madero systems are available with either steel or fiberglass doors and frame options of wood, wood with Framesaver[®], smooth white composite or textured composite. Simply decide which system works for you, select your door size, jamb depth, door handing and if required, complementary glass. It is that simple!

Steel



Fiberglass





ARTISAN DOORS

2020

Choose Your Product

Panelled Fiberglass.....	4
Panelled Steel.....	6
Stainless Steel Decorative Elements.....	8
3 Panel Equal.....	10
Narrow Lite.....	12
Narrow Lite Flush Glazed.....	14
Spotlites.....	16-21
Victoria.....	22
Craftsman Fiberglass.....	24
3/4 Lite.....	26
1/2 Lite.....	28
One Lite Flush Door.....	30
Full Lite Flush Glazed.....	32

Choose Your Door Glass

Textured.....	36
Decorative.....	46
Wrought Iron.....	70
Silkscreen.....	75
V-Groove.....	78
Dialogue Layered.....	82
Functional.....	84

Add A Larson Door

Retractable Screen Away Storm Doors.....	97-101
Ventilating Storm Doors.....	102-103
Pet Storm Doors.....	104-105
Retractable Screen Doors.....	106-107

Choose Your Hardware

Hardware Drilling Options.....	109
Schlage Hardware.....	110
Multi-Point Hardware.....	111
Architectural Door Pulls.....	112
Locking Hardware.....	113

Design Your Madero Door

Operating Configurations.....	117
Garden Patio Doors.....	118-125
Steel Doors.....	127
Fiberglass Doors.....	129
Artisan Door Frame & Components.....	130-131
Pre-Finishing Options.....	133

About Madero.....135

Product Measurements & Checklists.....136-139



Teak door with 36" MegaTek™ Offset Pull in aluminum door frame system by others.

Panelled Fiberglass

Modern Teak

A modern grooved Teak woodgrain fiberglass door slab is perfect for contemporary and retro style homes. Prehung in a composite frame, with an option to use a primed wood frame. Choose direct glazed sidelites and transom to complement this luxurious panelled door.

Sizes: Width: 2/8, 2/10, 3/0 | Height: 6/8



Model TG99

Rustic Mahogany 2 Panel Plank

A two panel plank Mahogany woodgrain fiberglass door slab best complements a country or heritage style home. Prehung in a Mahogany woodgrain composite frame, with an option to use a primed wood frame. Choose direct glazed sidelites and transom to complement this rustic panelled door.

Sizes: Width: 3/0 | Height: 6/8, 8/0



Model RG22

Rustic Mahogany Plank

A one panel plank Mahogany woodgrain fiberglass door slab complements the sleek architectural styling of new home designs. Prehung in a Mahogany woodgrain composite frame, with an option to use a primed wood frame. Choose direct glazed sidelites and transom to complement this popular panelled door.

Sizes: Width: 3/0 | Height: 6/8



Model RG12



Tao steel door in painted wood frame. Shown with custom frosted sidelite and transom.

Panelled Steel

Tao

Tao means harmony with nature. This steel door's horizontal lines feature gentle organic curves for a minimalist style. Prehung in a smooth white composite frame, with an option to use a primed wood frame. Choose direct glazed sidelites and transom to complement this bold design.

Sizes: Width: 2/10, 3/0 | Height: 6/8, 8/0



Horizontal, curved embossed lines



Model Tao

Soho

This steel door four panel embossed configuration is very popular in today's architecture. Prehung in a smooth white composite frame, with an option to use a primed wood frame. Choose direct glazed sidelites and transom to complement this classic design.

Sizes: Width: 2/8, 2/10, 3/0 | Height: 6/8



Shaker inspired embossed



Model Soho

Vog

Horizontal lines and angular embossing provide a graceful and simple style. Prehung in a smooth white composite frame, with an option to use a primed wood frame. Choose direct glazed sidelites and transom to complement this versatile design. Available in steel door only.

Sizes: Width: 2/10, 3/0 | Height: 6/8, 8/0



Horizontal, angular embossed lines



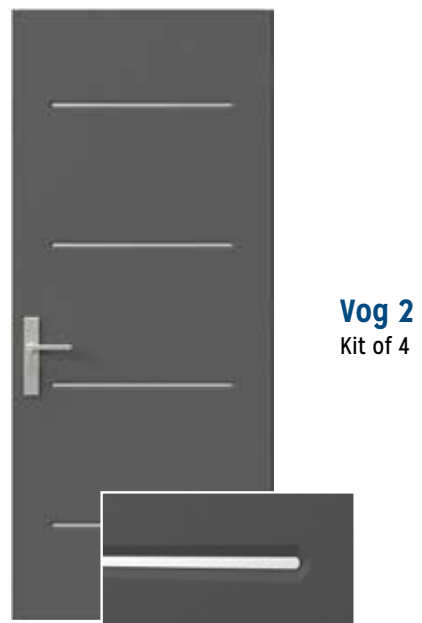
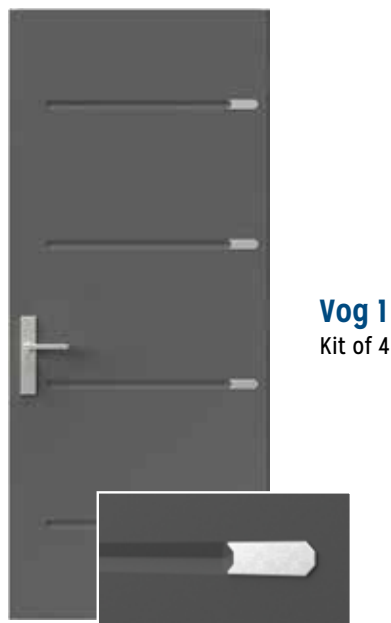
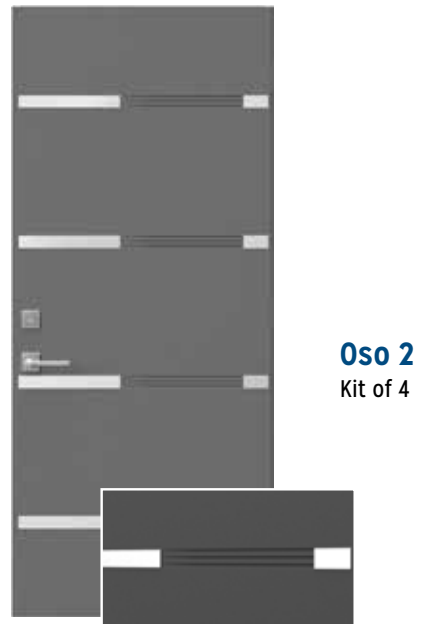
Model Vog



Vog 1 steel door with stainless steel decorative elements. Shown with MegaTek 36" Offset Pull and Schlage L460P High Security Mortise Lock.

Stainless Steel Decorative Elements

Customize your entrance and add character to your steel door with stainless steel decorative elements. This simple addition transforms the look of our Vog and Oso doors.





Three panel steel door in painted composite frame. Shown with Masterline glass, sidelite and clear glass in transom.

3 Panel Equal

3 Panel Equal

This door unit is available with a steel slab. Deep embossing provides dramatic street appeal. As a single opening or with full glazed sidelites, this is an excellent choice for your home. Prehung with frame options of wood, smooth white composite or textured composite.

Sizes: Width: 2/8, 2/10, 3/0 | Height: 6/8



Model 13

3 Lite

The 3 Lite door with glass inserts looks stunning with direct glazed sidelites for a very modern look. Achieve a timeless design by choosing matching 22" x 17" door glass and panelled sidelites. Available as either a steel or fiberglass door, with frame options of wood, smooth white composite or textured composite.

Sizes: Width: 2/8, 2/10, 3/0 | Height: 6/8



Model 00

3 Panel Equal | Steel & Fiberglass

Glass options

Choose from the selection shown for matching door and sidelite glass. Refer to madero.ca for glass door visualization.



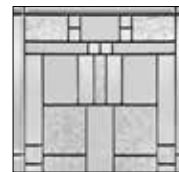
Alys



Azur



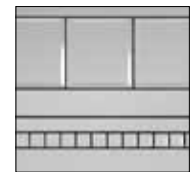
Barcello



Cachet



Celeste



Chanelle



Fluid



Mistral



Rhythm



Sandblast



St. James



Soft



Narrow Lite door system features a Melon painted slab with clear glass, black painted frame. Ordered with no brickmould.

Narrow Lite

Linea

Linea's distinctive embossing gives it a post industrial look. Select glass from options shown on page 15. Available in steel only. Prehung with frame options of wood, smooth white composite or textured composite. Choose direct glazed sidelites or matching glass in full panelled sidelites.

Sizes: Width: 2/8, 2/10, 3/0 | Height: 6/8



Embossed post-industrial look



Model Linea

Oso

The asymmetrical design of the grooved panel allows for the integration of a narrow door lite. Select from glass options shown on page 15. Available in steel only. Prehung with frame options of wood, smooth white composite or textured composite. Choose direct glazed sidelites or matching glass in full panelled sidelites. Note: When used with stainless elements (page 9) glass is not available.

Sizes: Width: 2/10, 3/0 | Height: 6/8



Multi-grooved embossing



Model Oso

Flush 764N

When using a flush slab, you have three unique looks to choose from. One insert can be positioned on the left or right hand side, or centered for a mid-century feel. The N2 model works well with matching sidelites on both sides. Select your glass from page 15. Available in either a steel or fiberglass door, with frame options of wood, smooth white composite or textured composite.

Sizes: Width: 2/6, 2/8, 2/10, 3/0 | Height: 6/8, 8/0

Glass Size: 7" x 64" (6/8), 8" x 80" (8/0)



Narrow Lite Centered
764-N
880-N



Narrow Lite
764-NL (Left)
764-NR (Right)
880-NL
880-NR



2 Narrow Lite
764-N2
880-N2



Model Flush 764N



Narrow Lite door with clear glass. Schlage Eller lever with Kinsler trim and the Encode Smart Wifi deadbolt.

Narrow Lite | Flush Glazed

Flush glazing gives a sleek, minimalistic look with no need for a screw-in insert. Glass can be positioned on the left or right hand side. Available only with a smooth white fiberglass door and frame options of smooth white composite or wood.

Sizes: Width: 2/8, 2/10, 3/0, 3/6 | Height: 6/8
Width: 3/0, 3/6 | Height: 8/0

Glass Size: 8" x 64" (6/8), 8" x 80" (8/0)

Glass Designs: 6/8: clear, frosted
8/0: All designs available in 8" x 80"



(as viewed from outside)

Flush glazed fiberglass slabs provide sleek lines to give a more enhanced viewing area. The pre-pigmented smooth white slab is consistent from door edge to glass. The slab is manufactured as a one piece open and beaded mould with glass installed during the assembly process.



Model II



Flush Glazed Fiberglass

Narrow Lite | Steel & Fiberglass

Glass Options

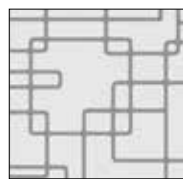
Choose from the selection shown for matching door and sidelite glass. Refer to madero.ca for glass in door visualization.



Aly's
7"x64", 8"x80"



Azur
7"x64", 8"x80"



Circuit
7"x64"



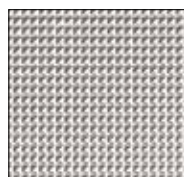
Celeste
7"x64", 8"x80"



Chinchilla
7"x64"



Clear
7"x64", 8"x64", 8"x80"



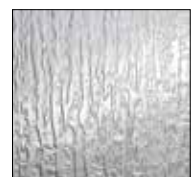
Cubed
7"x64"



Fluid
7"x64", 8"x80"



Frosted
7"x64", 8"x64", 8"x80"



Rain
7"x64"



Spotlites 6 lite horizontal oak woodgrain textured door with frosted glass, 14" frosted sidelite, 16" straight Noirtek™ door pull and Schlage B60 deadbolt in matte black.

Spotlites

Model 842

Spotlites are the ideal choice for a modern mid-century home, while also complementing a variety of home designs. Six glass patterns are available in 22" x 3.5". Available in a steel or fiberglass door and with frame options of wood, smooth white composite or textured composite.

Sizes: Width: 2/8, 2/10, 3/0, 3/6 | Height: 6/8, 8/0

Glass Size: 22" x 3.5"



**3 Lite Vertical
Option A**
223-3LVA

**3 Lite Vertical
Option B**
223-3LVB

**5 Lite
Horizontal**
223-5LH

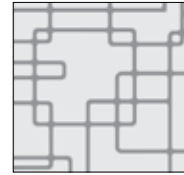
**6 Lite
Horizontal (8/0)**
223-6LH

Glass Options

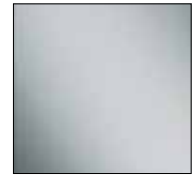
Choose from the selection shown for matching door and sidelite glass. Refer to madero.ca for glass in door visualization.



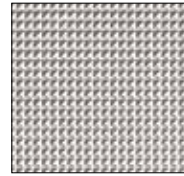
Chinchilla



Circuit



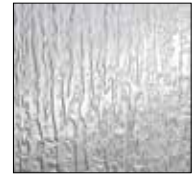
Clear - Low E



Cubed



Frosted



Rain



3 Lite Vertical Option B



5 Lite painted in Tangerine, this 8/0 door unit showcases a packed mullion.

Spotlights

Model 651

This design adds a modern flair to any architectural styling. Several glass patterns are available in 22" x 10". Clear or frosted door glass partnered with direct glazed sidelites are the most popular. Available in a steel or fiberglass door with frame options of wood, smooth white composite or textured composite.

Sizes: Width: 2/8, 2/10, 3/0, 3/6 | Height: 6/8, 8/0

Glass Size: 22" x 10"



4 Lite
2210-4



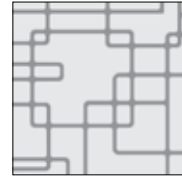
5 Lite (8/0)
2210-5

Glass Options

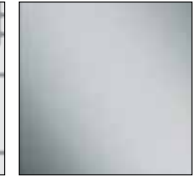
Choose from the selection shown for matching door and sidelite glass. Refer to madero.ca for glass in door visualization.



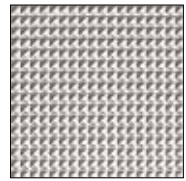
Chinchilla



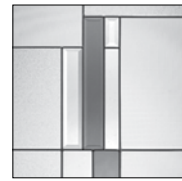
Circuit



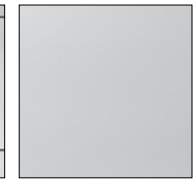
Clear - Low E



Cubed



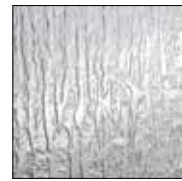
Cuzco



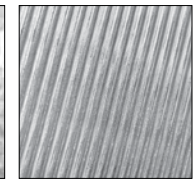
Frosted



Pear



Rain



Quill



4 Lite painted in Ash.



Steelcomp Spotlite 3 Lite Square door system in black paint with Cubed glass. Shown with MegaTek 36" Offset Pull and Schlage L460P High Security Mortise Lock.

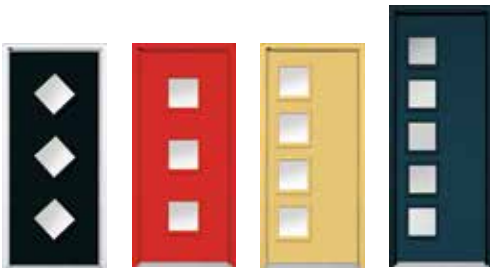
Spotlites

Model 840

This popular pattern that began in the 1950's has made a resurgence to elevate modern home architecture. The 12" x 12" square is available in 6 glass patterns. Choose a steel or fiberglass door with frame options of wood, smooth white composite or textured composite.

Sizes: Width: 2/8, 2/10, 3/0 | Height: 6/8, 8/0

Glass Sizes: 12" x 12"



3 Lite Diamond
1212-BD

3 Lite Square
1212-3S

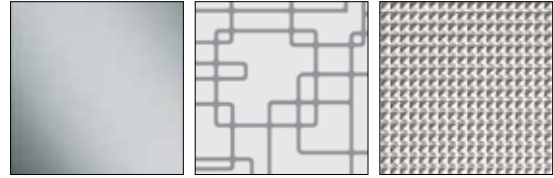
4 Lite Square
1212-4S

5 Lite Square (8/0)
1212-5S

Lockside opposite of glass

Glass Options

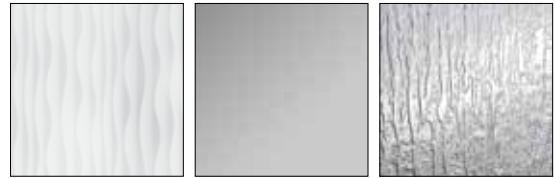
Choose from the selection shown for matching door and sidelite glass. Refer to madero.ca for glass in door visualization.



Clear - Low E

Circuit

Cubed



Fluid

Sandblast

Rain



4 Lite square spollites painted Melon.



*Victoria steel door with panelled
sidelites and clear glass. Custom painted.*

Victoria

Victoria

Available in a steel door only, the Victoria Shaker is inspired by classic American architectural styles. The embossing showcases beautifully when the door is painted. Used as either a panelled door or add one 22" x 14-7/16" glass insert. Prehung in a smooth white composite frame, with an option to use a primed wood frame. Choose direct glazed sidelites or matching glass in a full panelled sidelite.

Sizes: Width: 2/8, 2/10, 3/0 | Height: 6/8



Victoria
Cutout

Victoria



Decorative Shelf

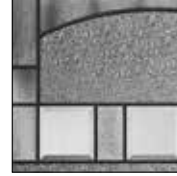
Optional for the Victoria Shaker steel door. Easily installed with screws.

Glass Options

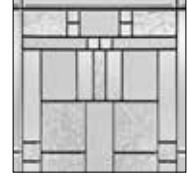
Choose from the selection shown for matching door and sidelite glass. Refer to madero.ca for glass in door visualization.



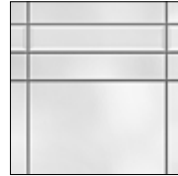
Alys



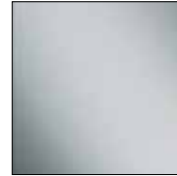
Bistro



Cachet



Celeste



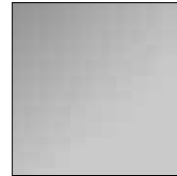
Clear



Fluid



Kallima



Sandblast



Soft



Victoria steel door featuring Celeste glass custom painted. Shown with optional decorative shelf.



*Craftsman smooth white with
Metropolis glass and 4 Block Dentil Shelf.*

Craftsman Fiberglass

All Craftsman doors include a custom factory installed insert, designs as shown. Dentil shelves and SDL kits are sold separately.



4 Block Fir Woodgrain Dentil Shelf

Fir Woodgrain

Fir grain has straight, fine vertical graining with deep embossed panels creating beautiful shadow lines and the appearance of real wood in this textured fiberglass door. When ordered the door is a light almond color to accept paint or stain. Choose matching sidelites and a fir composite frame.

Smooth White

A timeless design suitable for so many architectural homes. This maintenance free door partners with a composite frame and matching sidelites.



Brentwood
6/8 Height
3/0 Width
ENFGB



Spring
6/8 Height
3/0 Width
ENFGS



Metropolis
6/8 Height
3/0 Width
8/0 Height
3/0 Width
ENFGM



Metropolis
6/8 Height
3/0 Width
8/0 Height
3/0 Width
FCM



Optional Accessories

Available in Fir Woodgrain or Smooth White



6 Lite Simulated Divided Lite (SDL) Kit



3 Lite Simulated Divided Lite (SDL) Kit



4 Block Dentil Shelf

Optional door accessories are sold separately.



3/4 Lite - Model 24 with Focus glass.

3/4 Lite

3/4 Lite | 4 Panel

3/4 glass is very popular for front entrances, as the wide array of 22" x 48" glass options provide excellent street appeal, while complementing every architectural style. Coordinate all entryways in your home by using these door models with or without glass. Available in a steel or fiberglass door with frame options of wood, smooth white composite or textured composite.

Sizes: Width: 2/8, 2/10, 3/0 | Height: 6/8



Model 49



Optimus doorglass shown

3/4 Lite | 2 Panel

A two panel door is another popular option for a 3/4 lite design. Coordinate all entry ways in your home by using Model 25 with or without glass. Available in a steel or fiberglass door with frame options of wood, smooth white composite or textured composite.

Sizes: Width: 2/8, 2/10, 3/0 | Height: 6/8



Model 25



3/4 Lite | Steel & Fiberglass

3/4 Lite | Flush Glazed 2 Panel

This flush glazed option gives a cleaner look with a larger viewing area. No need for screw-in inserts. An extensive selection of 22" x 48" glass is available. Available only in fiberglass, with frame options of wood, smooth white composite or textured composite.

Sizes: Width: 2/8, 2/10, 3/0 | Height: 6/8



Model 24



Chelsea doorglass shown



Entrada featuring 1/2 Lite door with Full Lite sidelites and Oak Park glass. Shown with Schlage Camelot Handleset and B60 Cylindrical Deadbolt with Camelot Rose in Matte Black.

1/2 Lite

1/2 Lite | 2 Panel

An affordable option to match all the doors in your home. An extensive selection of 22" x 36" glass is available. Choose a steel or fiberglass door with frame options of wood, smooth white composite or textured composite. Doors partner well with 1/2 or full glass in panelled sidelites.

Sizes: Width: 2/8, 2/10, 3/0 | Height: 6/8



Model: 28



Cachet door glass shown

1/2 Lite | 6 Panel

Coordinate all entry ways in your home by using a 6 panel slab with or without glass. An extensive selection of 22" x 36" glass is available. Choose from steel or fiberglass door with frame options of wood, smooth white composite or textured composite. Doors partner well with 1/2 or full glass in panelled sidelites.

Sizes: Width: 2/8, 2/10, 3/0 | Height: 6/8

Width: 3/0 | Height: 8/0 (Glass size 22" x 48")



Model: 62



Mini Blinds door glass shown

1/2 Lite Flush Glazed

The flush glazed options give a cleaner look, with a larger viewing area and no need for screw-in inserts. An extensive selection of 22" x 36" glass is available. Available in fiberglass only with frame options of wood, smooth white composite or textured composite. Doors partner well with 1/2 or full glass in panelled sidelites.

Sizes: Width: 2/8, 2/10, 3/0 | Height: 6/8



Model: 23

Model: 27



Clear door glass shown



Flush SG00 smooth white fiberglass, shown painted with direct glazed transom and sidelite.

Flush Door

Flush Door | One Lite

The simplicity of a flush door (Model 00) can be used in many locations throughout the home. When partnered with a full length door pull or luxurious door hardware, the look becomes very modern.

One lite glass inserts can be added for rooms requiring extra natural light. The selection of glass options is unlimited for both the door and panelled sidelites. Glass selections can be found on pages 34 to 83. For visualization, go to madero.ca. Available in a steel or fiberglass door with frame options of wood, smooth white composite or textured composite.

Sizes: Width: 2/6, 2/8, 2/10, 3/0 | Height: 6/8, 8/0

Glass Size: 2/6, 2/8 x 6/8 - 20" x 64" 2/6, 2/8 x 8/0 - 20" x 80"
2/10, 3/0 x 6/8 - 22" x 64" 2/10, 3/0 x 8/0 - 22" x 80"



*One lite steel door featuring
Mistral glass with full sidelites.*



*Flush Glazed Brushed White
Fiberglass door in a full lite.*

Full Lite Flush Glazed

Full Lite | Flush Glazed Brushed White Fiberglass

New in 2020, brushed white fiberglass doors (Model BG15) have a finish unlike anything in the market. A pre-pigmented white skin has a 25 year warranty and accepts paint or stain. The flush glazing offers a wider viewing area and cleaner appearance. Available with frame options of wood, smooth white composite or textured composite. Full lite glass provides maximum natural light and the selection is limitless.

Glass selections can be found on pages 34 to 83. For visualization, go to madero.ca

Available as single door or partnered with matching flush glazed, panelled or direct glazed sidelites.

Sizes: Width: 2/8, 2/10, 3/0, 3/6 | Height: 6/8, 8/0

The pre-pigmented brushed white slab is consistent from door edge to glass. The slab is manufactured as a one piece open and beaded mould with glass installed during the assembly process.





One Lite featuring Geo-Tex glass, painted black.



CHOOSE YOUR Door Glass

Door glass is a great way to customize your front door and bring natural light into your home. Design selections from decorative glass to textured glass provide a solution for every architectural style of home.

Textured..... 36

Textures and patterns with a diverse selection of privacy bring a new dimension to entryway door glass.

Decorative..... 46

Handcrafted glass is cut and elegantly shaped to match the design preferences of home owners.

Privacy levels range from 0 (Transparent) to 10 (Opaque).

Wrought Iron..... 70

For homeowners who prefer wrought iron and rich patinas over highly polished finishes, this collection will have a design made for you.

Silkscreen..... 75

Silkscreen decorative glass is made by printing a layer of UV cured ink on the surface of glass through the screen mesh used for tempering. As a result silkscreen printed glass is durable, scratch proof, solar shading, anti-glare and beautiful.

V-Groove..... 78

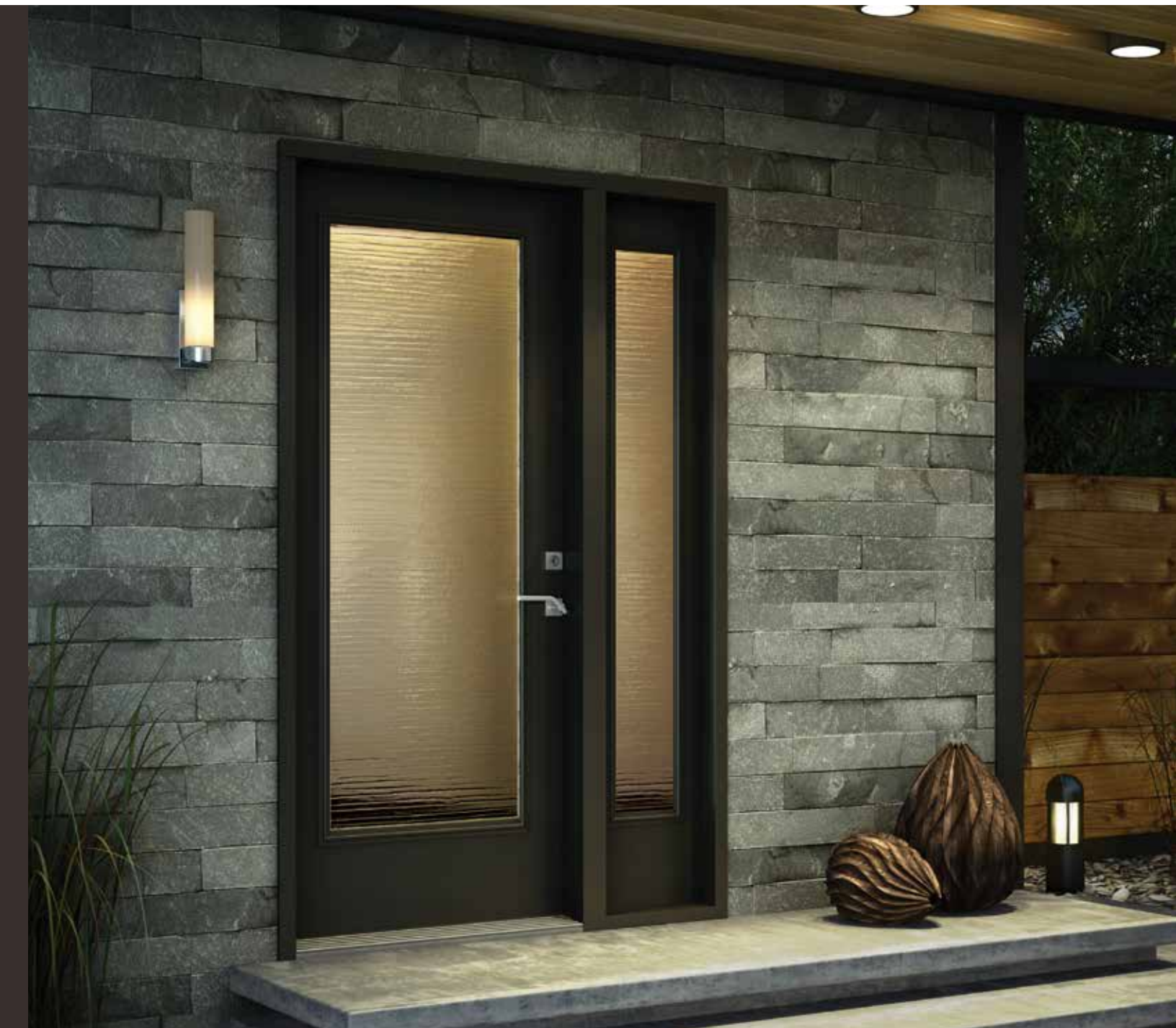
V-Groove patterns incorporate an engraving process on sandblasted tempered glass, providing texture and elegance while still having the allure of decorative glass.

Dialogue Layered..... 82

Dialogue glass takes on a personality of its own as multiple layers interact with one another. Each of the six ceramic frit patterns change form and move as light or a person's vantage point changes.

Functional..... 84

When function and budget matter, Clear glass, Clear glass with Grilles, Venting units and Mini Blinds are the primary choices.



St. James

Multi-level textured glass inspired by brick and stone finishes. St. James has highly defined textured thermoformed glass and lines that will look great in the most natural of decors. Privacy level 9.

Novatech[®]

Textured Glass

Textures and patterns with a diverse selection of privacy bring a new dimension to entryway door glass. Textured glass is available in door glass sizes of 1/2, 3/4, and full lites with matching panelled sidelites. Direct glazed sidelites partner with Clear Low E or Frosted Low E.

For patterns not featured, refer to madero.ca



3/4 Lite with Quill glass



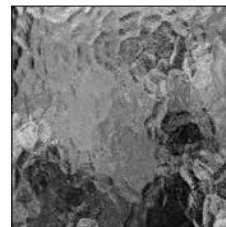
BLANCA \$
View on page 42



CHINCHILLA \$\$
View on madero.ca



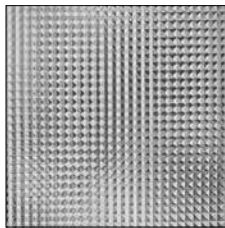
CHORD \$\$
View on madero.ca



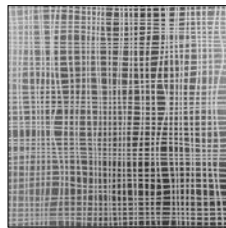
CUMULUS \$\$
View on madero.ca



FLUID \$\$
View on page 38



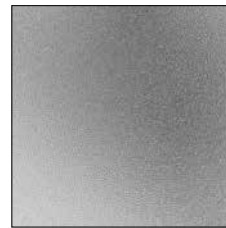
GEO-TEX \$\$
View on page 34



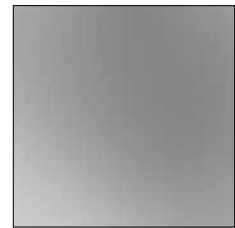
LINEN \$
View on page 43



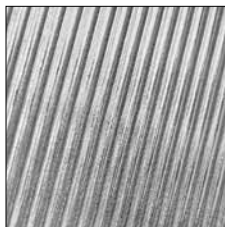
MOSAIC \$\$
View on madero.ca



PEAR \$\$
View on madero.ca



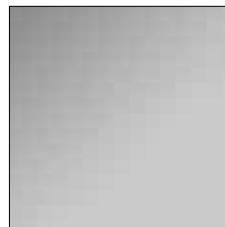
PEARL \$\$
View on madero.ca



QUILL \$\$
View on page 37



RAIN \$
View on page 44



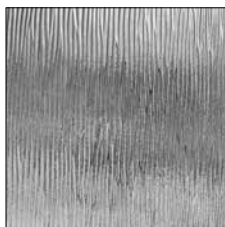
SANDBLAST \$\$
View on page 40



SOFT \$\$
View on page 41



ST. JAMES \$\$\$
View on page 36



STREAMED \$
View on page 45



VAPOR \$\$
View on page 39

PRIVACY RATING



1 - Transparent
Objects can be seen clearly through the glass from the other side.

5 - Diffused
Objects are diffused, but still detectable through the glass from the other side.

10 - Private
Only light will travel through the glass from the other side.



Fluid

This innovative glass design leaves an impression of calmness. Its bold yet simple pattern is well suited for contemporary entrances. Privacy level 5.

Novatech®



Vapor

Reminiscent of the northern lights. Vapor creates an ethereal play of light and shadow. Textured surface exposed to the inside of your home. Low E - privacy level 6.





Sandblast

Sandblasting gives this textured glass an elegant surface that allows natural colours to penetrate while preserving a high degree of privacy. Low E with Argon. Privacy level 9.

Novatech®



Soft

Soft attracts the eye and touch thanks to its unconventional upholstery looking pattern. Soft textured glass is a technological advancement that will define the character of your entrance. The textured surface is enclosed in glass. Low E with Argon. Privacy level 5.

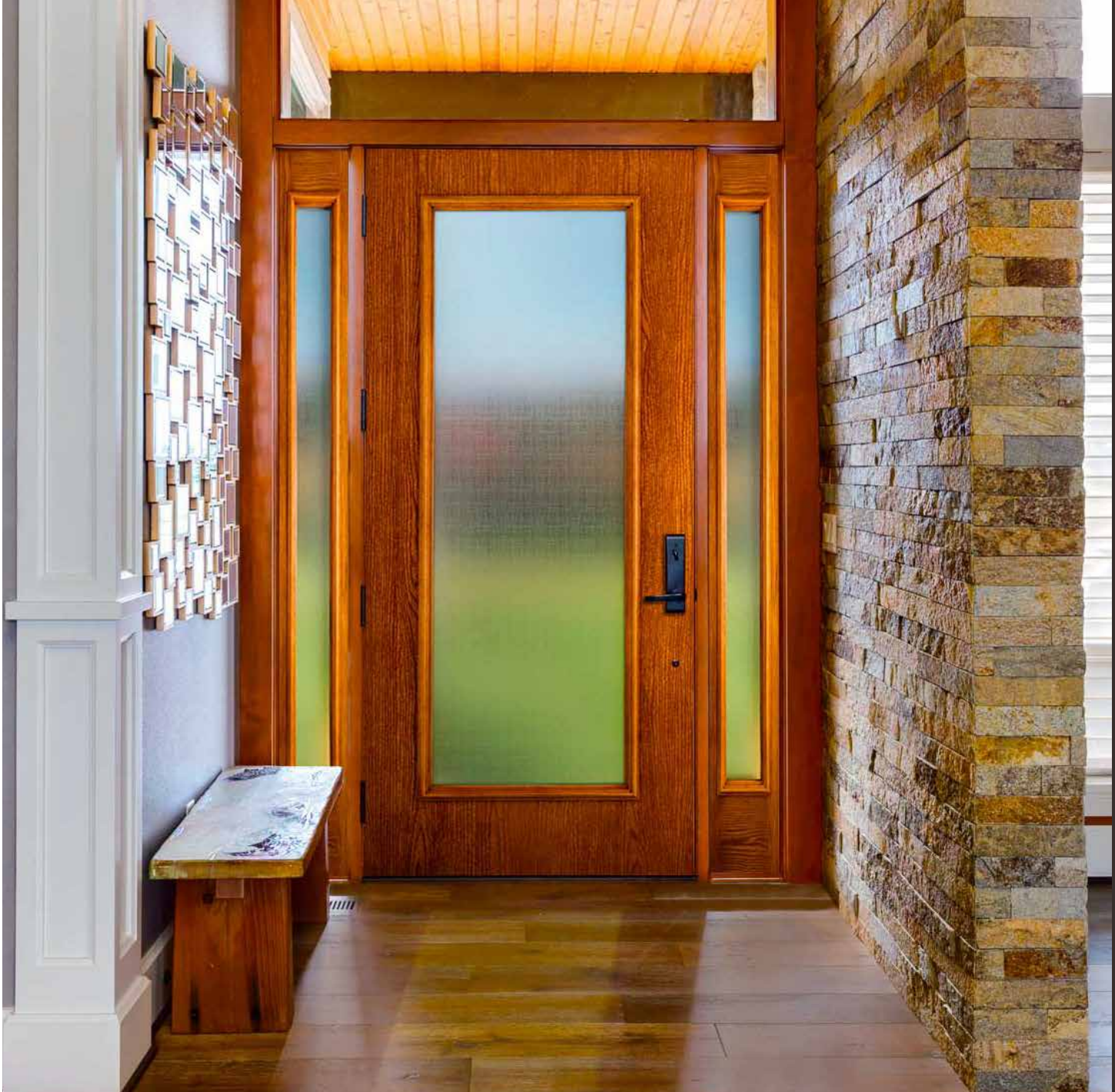
Novatech®



Blanca

Offering a high level of privacy and an understated backdrop, Blanca has a frosted, slightly stippled surface. The textured surface is enclosed in glass. Low E. Privacy level 9





Linen

Linen's lightly etched glass and woven pattern complements casual or formal entryway decor. The translucent white glass and soft moiré of linen threads give it a privacy level of 9. Textured glass surface is exposed to inside of your home. Low E.





Rain

Rain features a vertical pattern and a textured surface that create the illusion of rain trickling down a window. Textured glass surface is enclosed in glass. Privacy level 9.





Streamed

The pronounced vertical pattern and strong ribbed texture of Streamed glass creates the illusion of the organic flow of water. Textured glass surface is exposed to inside of your home. Low E. Privacy level 9.



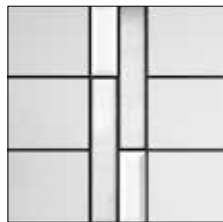
Decorative Glass

Handcrafted glass is cut and elegantly shaped to match the diverse design preferences of home owners. Decorative glass is available in door glass size of 1/2, 3/4 and full lites with matching panelled sidelites, unless otherwise shown on feature pages. Direct glazed sidelites and transoms are available with Clear Low E or Frosted Low E glass.

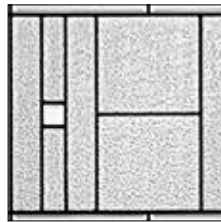
For patterns not featured, refer to madero.ca



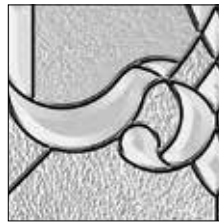
Full Lite with Belmont glass



ARIMA \$\$
View on page 69



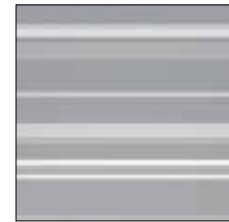
ATTRACTION \$\$\$
View on madero.ca



AVANT \$\$\$
View on madero.ca



AVENUE \$\$
View on page 56



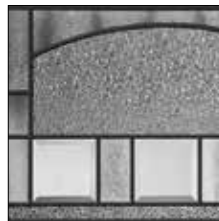
AZUR \$\$
View on page 49



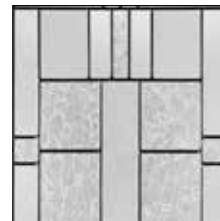
BARCELLO \$\$\$
View on page 53



BELMONT \$\$
View on page 46



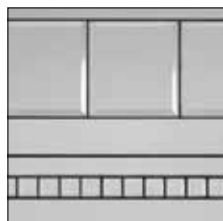
BISTRO \$\$
View on page 55



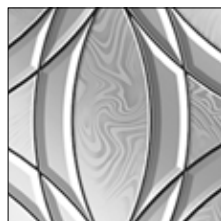
CACHET \$\$\$
View on page 29



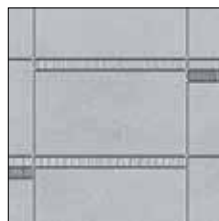
CELESTE \$\$
View on page 23 & 57



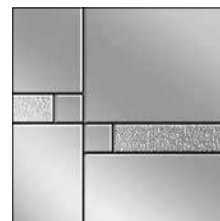
CHANELLE \$\$\$
View on page 48



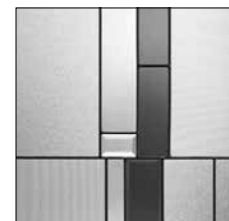
CHELSEA \$\$\$\$
View on page 27



CROSSWALK \$\$\$
View on page 52



CRUZ \$\$\$
View on page 54



CUZCO \$\$\$
View on page 50



EDGE \$\$
View on page 51



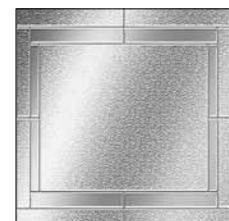
ELEMENT \$\$\$
View on madero.ca



ENTROPY \$\$\$
View on page 50



EXPRESSIONS \$\$\$
View on madero.ca

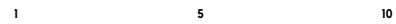


FOCUS \$\$\$\$
View on page 26

Decorative Glass

For patterns not featured, refer to madero.ca

PRIVACY RATING



1 - Transparent
Objects can be seen clearly through the glass from the other side.

5 - Diffused
Objects are diffused, but still detectable through the glass from the other side.

10 - Private
Only light will travel through the glass from the other side.



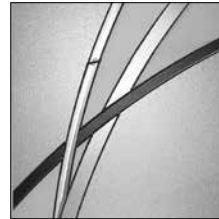
GEORGIAN \$\$\$
View on madero.ca



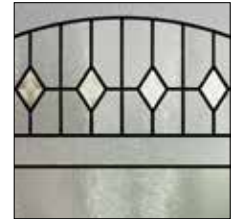
HEIRLOOMS \$\$
View on page 93



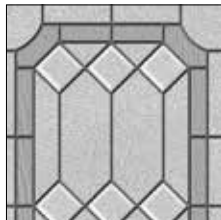
KALLIMA \$\$\$
View on madero.ca



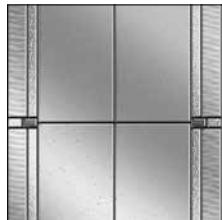
KORDELLA \$\$\$
View on madero.ca



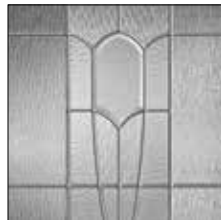
LIANO \$\$
View on page 63



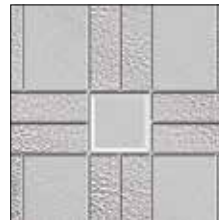
MAJESTIC \$\$
View on madero.ca



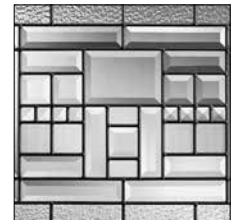
MARCO \$\$\$
View on madero.ca



MISTRAL \$\$\$
View on page 31



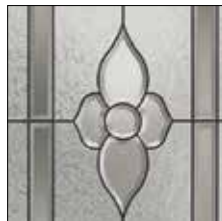
MONTEREY \$\$\$
View on madero.ca



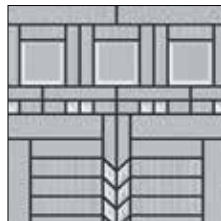
NAPLES \$\$\$
View on madero.ca



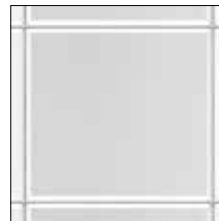
NASSAU \$\$
View on page 64



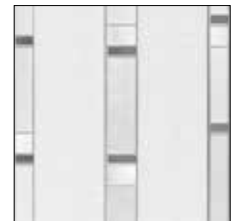
NOUVEAU \$\$
View on madero.ca



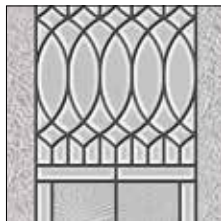
OAK PARK \$\$
View on page 28



OPAL \$\$
View on page 62



OPHIR \$\$
View on page 68



PARIS \$\$\$
View on page 67



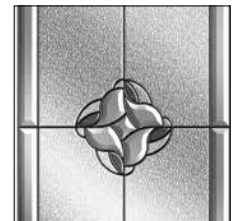
PARKWAY \$\$
View on page 65



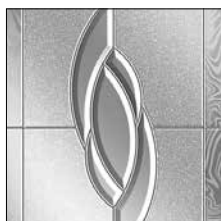
RADIANT HUES \$\$
View on madero.ca



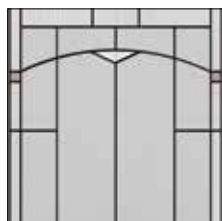
RENEWED IMPRESSIONS \$\$\$
View on page 58



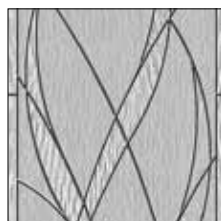
ROZET \$\$\$\$
View on page 66



SONNET \$\$\$
View on page 59



TOPAZ \$\$
View on madero.ca



WATERSIDE \$\$\$
View on page 61



WINCHESTER \$\$
View on madero.ca



Chanelle

Stylish Chanelle can be elegantly integrated into the architectural styling of a bygone era, or matched to the simple, sleek lines of today. Beveling is the hallmark of this refined design. Chinchilla, Niagara and Beveled clear glass with patina coming provide privacy level 6. For 7" x 64" use a Niagara insert. Decorative glass is enclosed, providing a triple glazed unit. Low E with Argon.

Novatech®

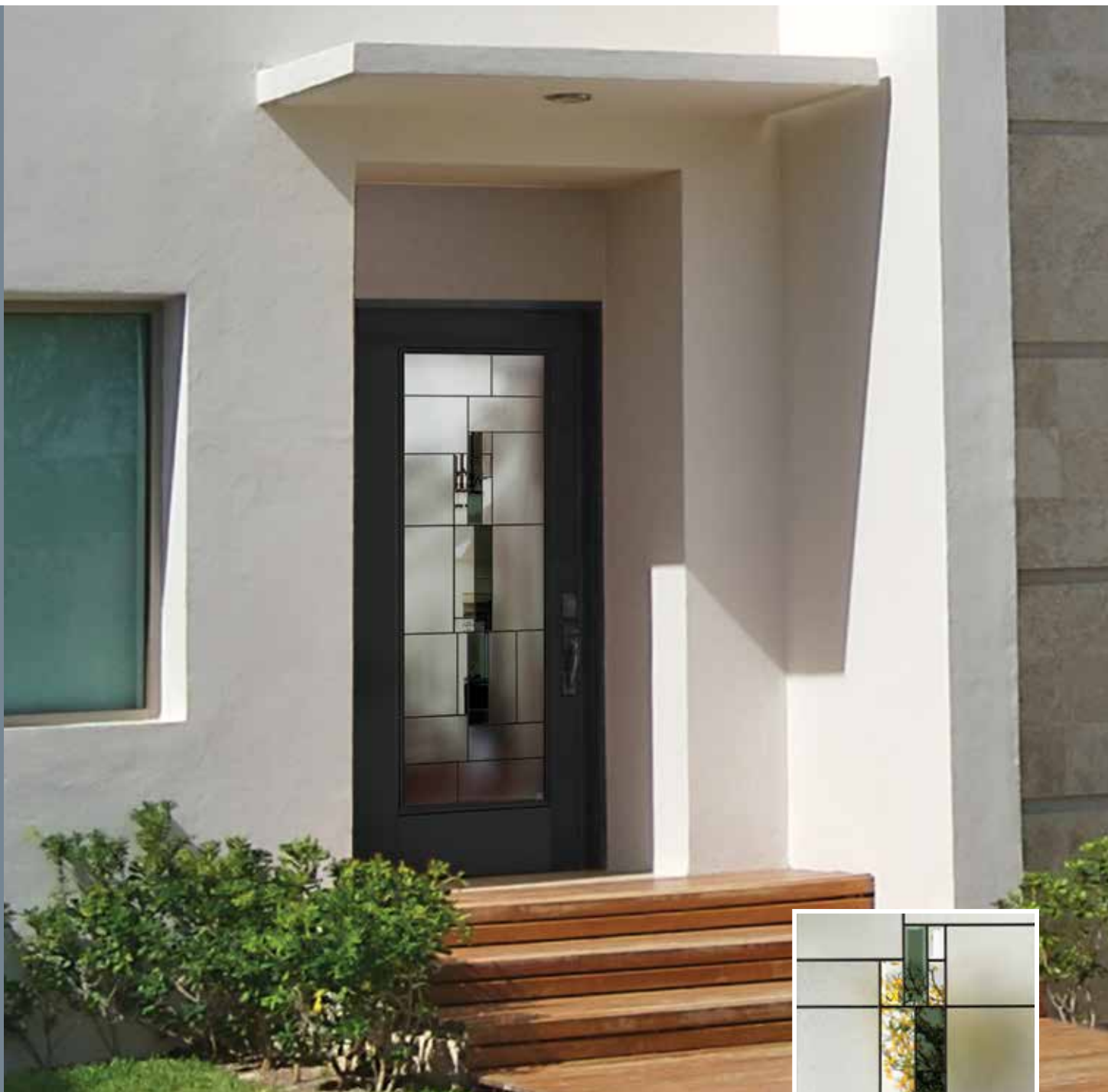


Azur

Elegant and distinguished, Azur will give the privacy you need with its sandblasted glass, while the clear glass bands will brighten up your space. Low E with Argon. Privacy level 5.



Novatech®



Cuzco

The contrast between the grey and clear tones add a new dimension to the decor of your home. Pear, Mistlite and Seedy glass partner with dark grey accents to make this glass a designers choice. Antique black coming will complement your door hardware. Decorative glass is enclosed, providing a triple glazed unit. Privacy level 7

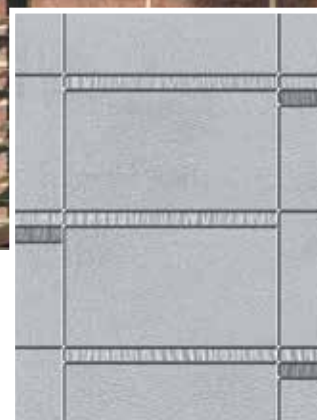




Edge

Featuring a sandblasted centre surrounded by a Clear glass border, Edge offers both privacy and visibility. Ideal for town homes and apartments. Low E with Argon. Privacy level 7.

Novatech



Crosswalk

Modern design comes to life through strong linear lines interrupted by bold pops of grey glass. Crosswalk's look is abstract, modern and stylish. Softwave glass in clear and grey is complemented by Micro-Iced Granite glass. Nickel coming is used for a visually clean look. Privacy level 8.





Barcello

A piece of aluminum is incorporated into the Barcello design giving it an industrial look. Pale grey Water and Rain glass partner with zinc caming. Decorative glass is enclosed, providing a triple glazed unit. Low E with Argon. Privacy level 6.

Only available in full lite, full sidelite, 3/4 lite, 3/4 sidelite.





Cruz

Very clean, very elegant, this linear design is new to the market. Mistlite glass with clear and granite accent panels. Outlined in antique black coming for a dramatic flair. Privacy level 8.

 MASONITE.



Bistro

Bistro's arch head piece and its well placed clear beveled square panes, contribute to its overall warmth. Chinchilla, Diamond and Beveled clear glass combine with patina coming. Decorative glass is enclosed, providing a triple paned unit. Low E with Argon. Privacy level 6.

Novatech®



Avenue

This stylish design is an angular blend of Frosted and Vapor glass patterning with patina coming. Decorative glass is enclosed, providing a triple paned unit. Low E with Argon. Privacy level 8.

Only available in 3/4 lite, 3/4 sidelite, 1/2 lite, 1/2 sidelite.

Novatech®



Celeste

Celeste juxtaposes different types of glass within its patina coming creating a delicate geometric pattern with a refined and balanced light effect. Decorative glass is enclosed, providing a triple paned unit. Low E with Argon. Privacy level 7.



Novatech®



Only available in full lite, 1/2 lite, full sidelite.

Renewed Impressions

The sweeping floral patterns of our signature impressions decorative glass are elegantly refreshed with nickel caming. Privacy level 7.





Sonnet

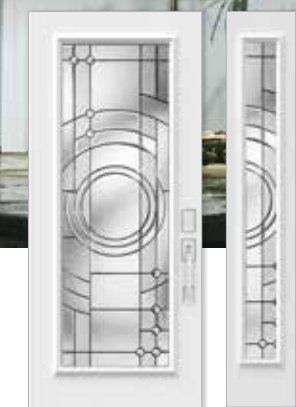
Framed by Baroque glass, the use of Pear glass for texture and the clear beveled cluster make this a show stopper. Platinum coming supports the design. Privacy level 5.





Entropy

Circular patterns and a black chrome finish add a dramatic flair. Clear translucent and textured glass provide the wow factor. Privacy level 5.



Only available in full lite, full sidelite.





Waterside

Movement is depicted by the glass selection of Softwave and Streamed glass patterns. Black chrome coming sets off the pattern. Privacy level 8.





Opal

Opal is the result of a rich arrangement of beveled glass in a timeless traditional style. Clear and Satin finish glass will ensure the privacy of your home, while allowing light to flood in. Decorative glass is enclosed, providing a triple paned unit. Low E with Argon. Privacy level 7.

Novatech®



Liano

The camber top and crown of beveled diamonds gives a majestic look with a subtle charm. Chinchilla and Diamond glass are accented by the patina caming. Decorative glass is enclosed, providing a triple paned unit. Low E with Argon. Privacy level 9.



Only available in 1/2 lite, 1/2 sidelite, 3/4 lite, 3/4 sidelite





Nassau

Contrasting horizontal and perpendicular lines, Nassau's playful composition carefully blends wide Reed and Masterline glass to create a unique look. Triple paned unit with Low E and Argon. Privacy level 9.

Novatech®



Parkway

A center stripe of streamer glass between Micro-Iced Granite, divides the evenly balanced Parkway design. This is showcased in Zinc caming. Privacy level 9.

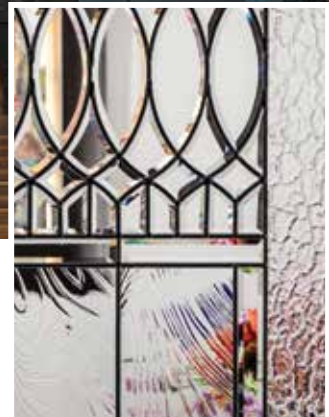




Rozet

The center bevel cluster provides the statement to this design. The panel uses Granite, Pear, Grey Water and stunning clear beveled glass. Antique black caming is used to provide the stark outline to showcase the glass. Privacy level 5.

 MASONITE.



Paris

Your design sophistication and love of all things European makes Paris the fitting choice for your home. An elegant arrangement of clear bevels, textures and the patina finish define the styling of Old World charm. Privacy level 4.





Ophir

Contrasting vertical textured glass gives movement to Ophir. Granite, Pinhead, Gray and Aqualite glass paired with zinc or patina coming allow for a balance of privacy and light. Privacy level 7.

Novatech[®]



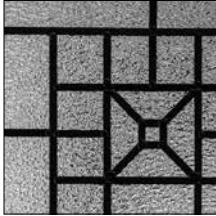
Arima

Arima features clean lines and a consistent rectangle pattern moving throughout the centre of the glass. Combining Screen, Satin and Beveled Clear glass gives a modern fresh feel. Privacy level 7.

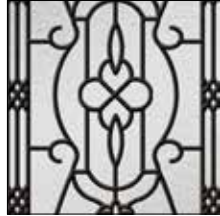
Novatech

Wrought Iron

For homeowners who prefer wrought iron and rich patinas over highly polished finishes, this collection will have the design made for you.



COURTYARD \$\$
View on page 71



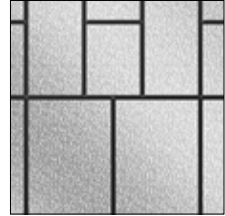
JACINTO \$\$\$
View on page 74



MADISON \$\$
View on page 72



MEDITERRANEAN \$\$\$
View on page 70



OPTIMUS \$\$\$
View on page 27 & 73



Mediterranean

Mediterranean pays homage to the wrought iron window grilles common in Mediterranean architecture. An old world feel comes with the use of Arctic textured glass. Privacy level 9.





Courtyard

The pronounced fretwork of Courtyard creates a look that is both strong and subtle. Privacy level 9.





Madison

Craftsman inspired design of Madison's geometric pattern and its nickel vein wrought iron finish will fit the landscape of your home. Mirco cubed glass provides a privacy level 9.





Optimus

A very popular wrought iron pattern that complements most architectural styles. Granite glass provides a privacy level of 9.



Only available in 3/4 lite, full lite, full sidelite.





Jacinto

Wrought iron scrolling and textured glass will add old world charm to your home. Whether your architectural style is Spanish or Rustic. Jacinto will bring an authentic touch to your entryway. Privacy level 9.

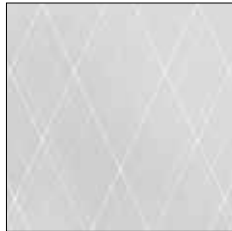


Only available in 3/4 lite, full lite, full sidelite.



Silkscreen Glass

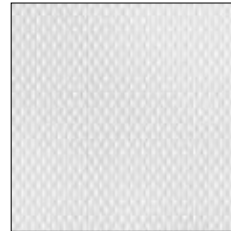
Silkscreen decorative glass is made by printing a layer of UV cured ink on the surface of glass through the screen mesh used for tempering. As a result silkscreen printed glass is durable, scratch proof, solar shading, anti-glare and beautiful.



ARUM \$\$
View on page 75



KIRA \$\$
View on page 76



VERSUM \$\$
View on page 77



Arum

Arum features two layers of silkscreen with various intersecting lines. Combining the two layers leaves a diamond pattern running throughout the glass. Privacy level 6.

Novatech[®]



Kira

Contrasting horizontal lines gives Kira a fresh and contemporary look. Two layers of silkscreen allow for overlapping lines for diffused light to shine in. Privacy level 6.





Versum

The two layers of silkscreen gives an offset pattern of small diamond shapes. The design creates a unique look and adds interesting texture to your entryway. Privacy level 6.



V-Groove Glass

V-Groove patterns incorporate an engraving process on sandblasted tempered glass. Providing texture and elegance while still having the allure of decorative glass.



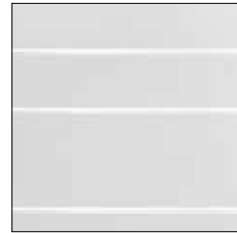
ALYS \$\$
View on page 79



EMORI \$\$
View on page 78



RHYTHM \$\$
View on page 80



ZENITH \$\$
View on page 81



Emori

Emori features an organic sandblasted pattern that reflects nature while giving you privacy and allowing light through the lines. Privacy level 9.

Novatech[®]



Alys

The Alys V-Groove suggests motion. It is both natural and abstract and will bring your entryway to life with its dynamic composition. Low E with Argon. Privacy level 9.



Novatech[®]



Rhythm

True to its name. Rhythm features a measured pattern of V-Groove lines making it perfect for homes designed using natural materials. Low E with Argon. Privacy level 7.





Zenith

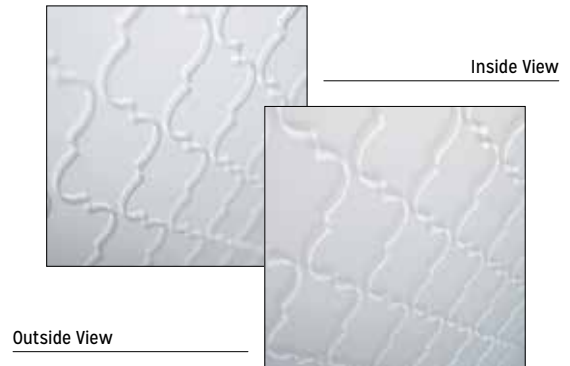
The simple V-Groove lines are perfect for any design whether paired with a bold textured exterior or a minimalist entryway. Sandblast and Clear glass provide a privacy rating of 6. Low E with Argon. Sidelite is shown in Sandblast glass.

Novatech[®]



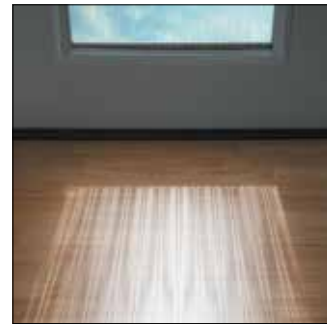
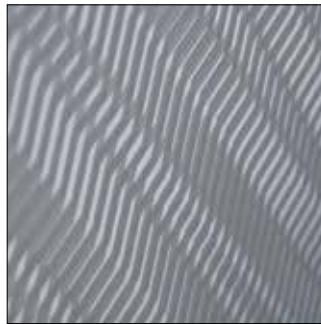
Dialogue Layered Glass

Dialogue glass takes on a personality of its own as multiple layers interact with one another. Each of the six ceramic frit patterns change form and move as light or a person's vantage point changes.



Banter

Banter's small scale pattern of overlapping diagonal lines creates a woven design that zig zags across layers of the door glass. The fine threads give the appearance of fully frosted glass. Privacy level 4.



Brainstorm

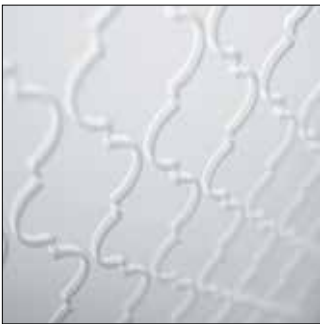
Brainstorm's exterior vertical pattern and interior chevron motif combine for an appearance of both subtlety and substance. Privacy level 6.





Chatter

A repetitive pattern of dots and lines creates a door glass design that reads as a texture. Privacy level 7.



Converse

What first appears to be cut glass is a stencil design in clear and frosted glass that hint of keyhole arches common in Moroccan architecture. Privacy level 8.



Repartee

Repartee's frosted layers and geometric grid combine for a design that plays with opacity and movement. Privacy level 8.



Whisper

Refined and graceful, the scrolled patterns and play between frosted and clear layers create gentle, quiet movement. Privacy level 8.



Functional Glass

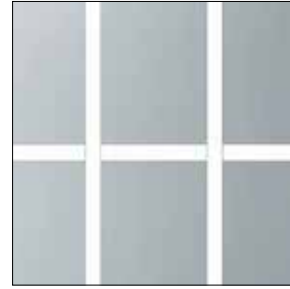
When function and budget matter, Clear glass, Clear glass with Grilles, Venting units and Mini Blinds are the primary choices. There are many selections to choose from including energy efficient Low E.



MINI BLINDS
View on pages 86 & 87



VENTS
View on page 92



GRILLES
View on pages 84 & 88



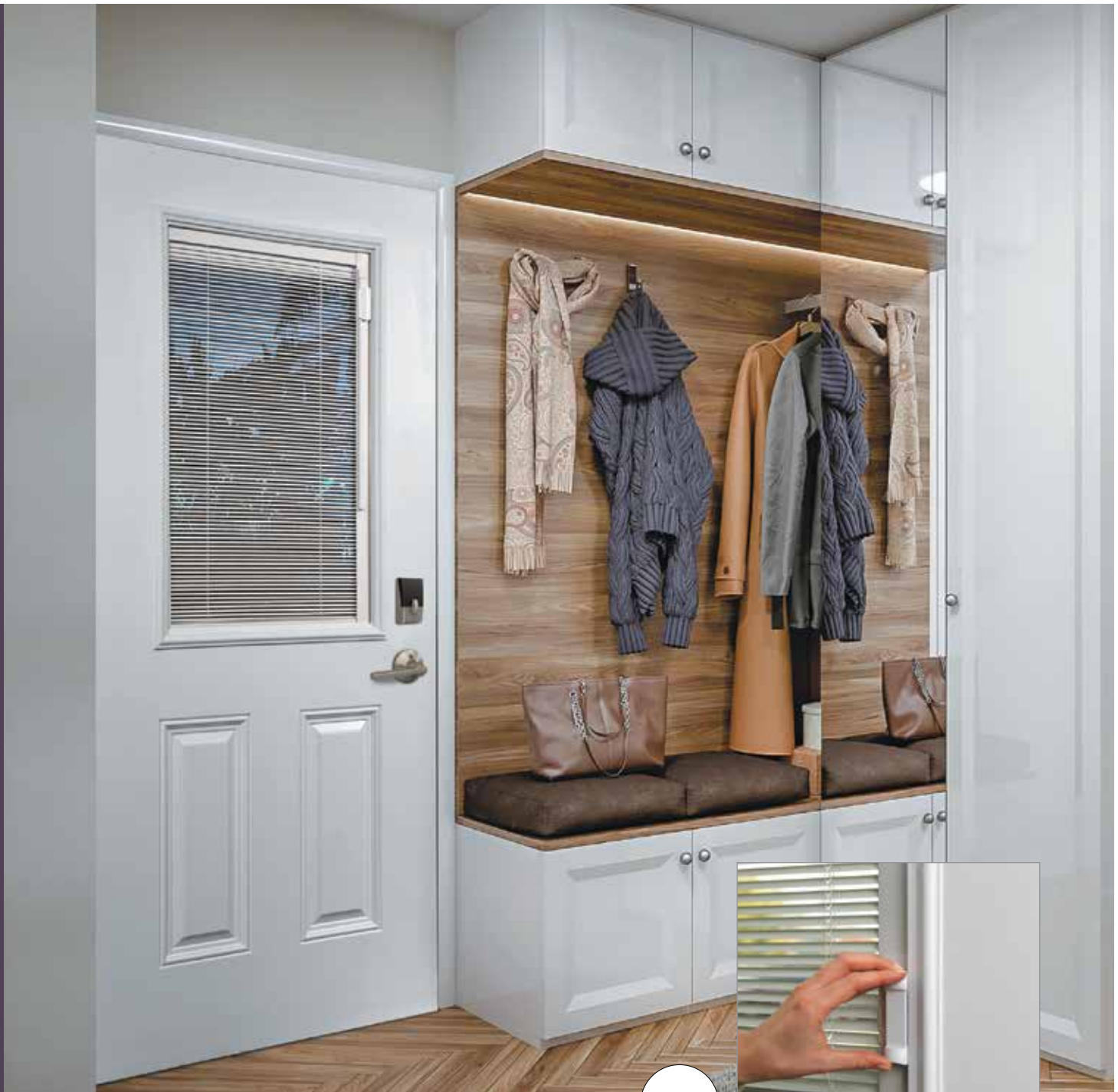
FROSTED
View on page 91



ADD ON BLINDS
View on pages 94 & 95



CLEAR
View on page 85 & 90



White

Enclosed Blinds Light Touch

The single operator lets you raise, lower or tilt the blinds in an easy, slight movement. Blinds adjust for complete light block, and the privacy channels on each side eliminate light gaps when the blinds are closed. Enclosed blinds are sealed tight to eliminate dusting.

Blind options are available in Low E and Double Low E to meet Energy Star 2020 certification.



Enclosed blinds with Espresso

Coloured Enclosed Blinds Collection

The coloured collection features 4 different colours to choose from: Sand, Espresso, Slate Grey and Silver Moon to coordinate with any decor preference. This collection has the same great features as the Light Touch Mini Blinds.



22"x64", 20"x64"

22"x80", 20"x80"

22"x36", 20"x36"



Espresso



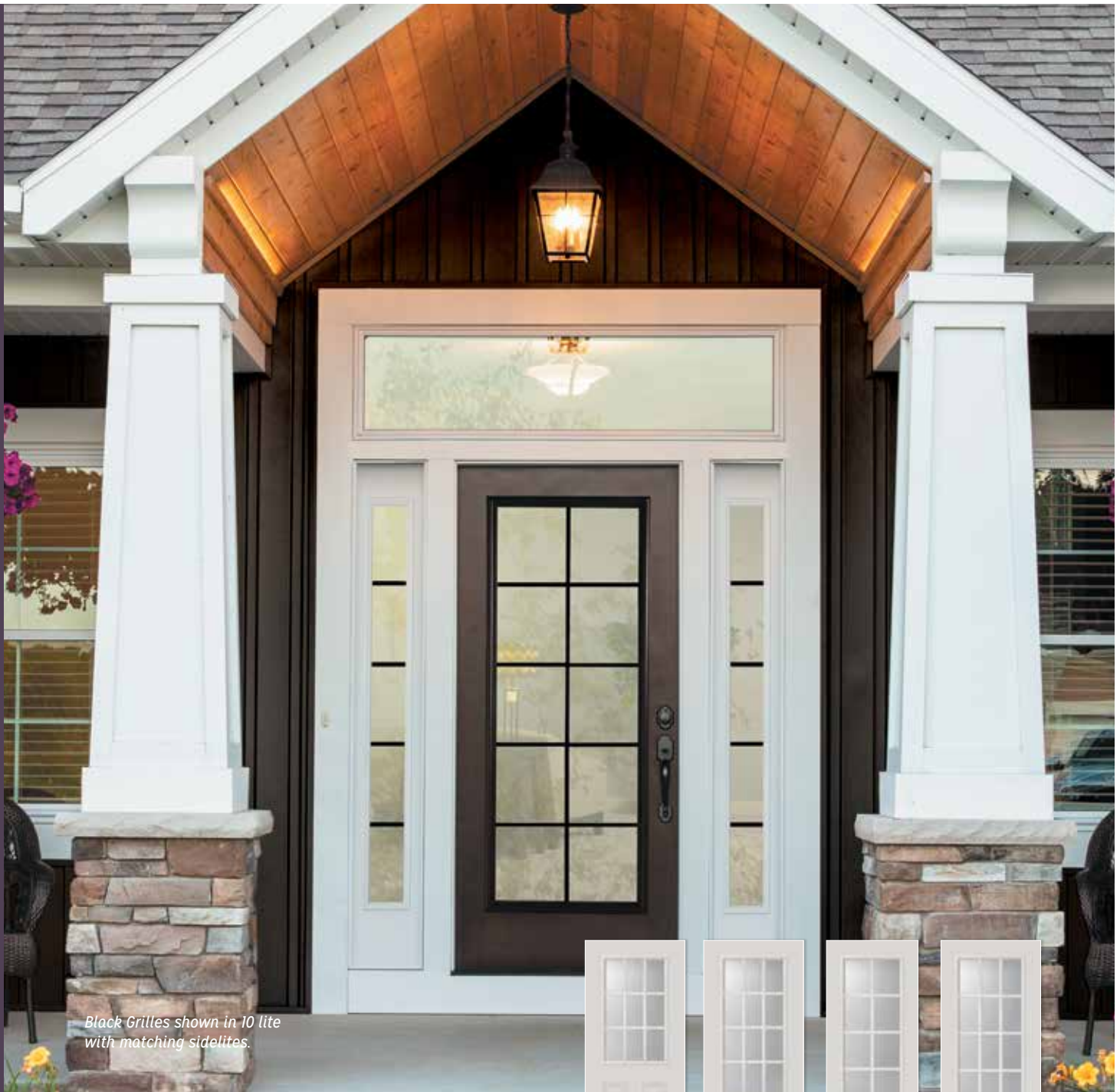
Sand



Silver Moon



Slate Gray



Black Grilles shown in 10 lite with matching sidelites.



1/2 Lite

3/4 Lite

One Lite - 10

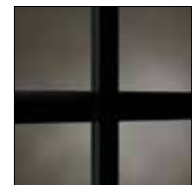
One Lite - 15

Grilles Between Glass Clear Glass

Internal grilles provide the beauty of a true divided lite with ease of cleaning. Grilles are available in 5/8" width, flat profile, Low E. For visualization, go to madero.ca



Grilles - White



Grilles - Black



Clear Glass Prairie Grid

White internal 5/8" width grilles strike the geometric balance that is the trademark of prairie style architecture. Grilles are a flat bar and the glass is Low E.





Clear

When you want the view and nothing but, clear glass is your answer. Partner with direct glazed sidelites and transom for a large window design. Low E.



Frosted

Frosted glass blends privacy with natural light. Sandblast glass (page 40) gives a similar appearance to Frosted glass and is available in most sizes.



Venting Inserts

Vents allow for a boost of fresh air in workshops, garages, or your home. Ten adjustments allow you to control the flow of air. A durable UV-resistant moulded frame and removable screen ease cleanup.



Glass Options:



CLEAR



RAIN

Only available 22" x 36"

Available sizes:



Mark-160
20" x 36"



Mark-12
22" x 36"



Mark-120
20" x 64"



Mark-122
22" x 64"



ComboPlus 40 Series 1/2 Vent paired with Fibercomp door system with Heirlooms Glass Insert and Schlage Orbit Knob in Satin Nickel.

Venting Doors

Combination Systems

COMBOPLUS^M

Made for the Canadian Climate

Madero's ComboPlus door systems are designed to provide a durable, energy efficient and easy to install entry solution while incorporating a fiberglass storm door.

Widths: 2/8, 2/10, 3/0

Heights: 6/8 only

Madero combination systems are also available in Entry Series Workhorse Combo and Workhorse ComboPlus designs, featuring standard 1-3/4" 6 panel door with half lite storm door. For more information, visit madero.ca.

Partner Any Madero Door System with a 1-3/8" Fiberglass Storm Door



**40 Series
1/2 Vent**

C/W SG40



**60 Series
Full Vent**

C/W SG60



Add-On Blinds

Add-on blinds offer unlimited adjustability for controlling light and privacy level. Easily installs over existing door glass in minutes.



Add-on Blinds Key Benefits

Light and privacy control

- Provides multiple levels of privacy
- Regulates light and U.V rays
- Reduces solar heat gain

Simplifies maintenance

- No dusting
- No tangled cords
- Decreases allergens

Easy to operate

- Fingertip adjustment
- Slide controllers raise, lower and tilt blinds
- No reaching or stopping to adjust blinds

Promotes safety

- Tempered safety glass
- Concealed cords
- Safe for children and pets

Easy installation

- Install over existing door glass
- Complete installation in minutes
- Paintable or stainable frame

Built to last

- No crimping or denting of blind slats
- Non-fading aluminum slats
- 5 Year Limited Warranty



22" x 36"



22" x 64"



20" x 64"



7" x 64"



8" x 36"

Before you buy:

- 2/8 door can only be single drilled, when using 22" x 36" blind.
- Not compatible over venting inserts.
- Not compatible with levers.
- Confirm the Add-on Blind will work with your existing hardware





Model 156 FVE, shown in Graphite.

ADD A Larson Door

Add a Larson Door to any model of Madero door system in 32", 34" or 36" by standard 6/8" height. Available as factory installed or as DIY for existing doors in your home. Please contact your Madero dealer for custom sizes and additional products available.

Retractable Screen Away Storm Doors.....	97-101
Ventilating Storm Doors.....	102-103
Pet Doors.....	104-105
Retractable Screen Doors.....	106-107



Model 156 Easy Vent XTR, shown in Graphite.

Retractable Screen Away Storm Doors

Larson's Retractable Screen Away® designs convert your storm door to a screen door instantly and discreetly rolls up and hides when not in use.

156 Easy Vent XTR with Hidden Closer



Handles sold separately

Door Colours



- Glass available in Clear or Clear Low E
- Hidden Closer built into the door with patent pending Click&Hold™ to keep the door open
- 4-in-1 retractable screen provides improved strength, superior privacy, better insect protection and enhanced solar protection
- 1-7/8" thick aluminum frame; maintenance-free finish
- Overlapping frame with double weatherstrip seals out weather and conceals hinges and gaps
- Screen Away® retractable screen disappears in top cassette for a clear view
- Sizes: 32", 36" Width x 81" Height



Model 146 Easy Vent shown in White.

146 Easy Vent Selection



Handles sold separately

Door Colours



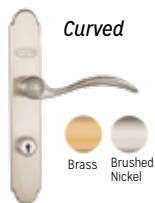
**SCREEN
AWAY**

- Glass available in Clear or Clear Low E
- 1-7/8" thick aluminum frame; maintenance-free finish
- Closer features a Hold-Open button that holds the storm door open with a tap of your toe
- Full glass design allows maximum natural light into home
- Maintenance-free aluminum frame and overlapping edge seals out harsh weather
- Double weatherstripping delivers superior weather protection
- Designer screw covers conceal exterior screws for a finished look
- Sizes: 32", 34", 36" Width x 81" Height



Model 356-52 shown in White.

356-52 Superior Fullview



Door Colours



White

**SCREEN
AWAY**

- Glass available in Clear
- 1-3/8" thick aluminum frame; maintenance-free finish
- Closer features a Hold-Open button that holds the storm door open with a tap of your toe
- Full glass design allows maximum natural light into home
- Overlapping edge seals out weather
- Decorative lever handle includes a built-in keyed lock
- Designer screw covers conceal exterior screws for a finished look
- Sizes: 32", 36" Width x 81" Height



Model 830, Retractable Screen Away, shown in White.



830 - Lifestyle Midview with Magnetic Seal Series



Colour



Handle

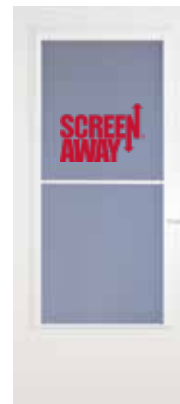


830

81" Height
2/8, 2/10, 3/0

- Magnetic weatherstrip seals like a refrigerator
- Retractable Screen Away® design offers the beauty of a clear view with the convenience of quick & easy ventilation
- DuraTech® finish protects against age and weather

370-81 - Life Core® Midview



Colour



Matching hardware included

370-81

81" Height
2/6, 2/8, 3/0

- Maintenance-free frame and heavy duty weatherstripping block out harsh weather
- 2/3 window offers increased sunlight
- Surface finish protects against age and weather



Model 288-SS, shown in Brown.



Ventilating Storm Doors

Let in the breeze when you want, and the way you want, with these ventilating doors!

Storm doors at a great value. Choose from all-metal frame construction or a tough, weather-resistant DuraTech® surface. Reversa Screen provides for top or bottom venting.



Model 298-SS



Model 283-ST in White.



298-SS Traditional Value Collection



Colour



White

298-SS

81" Height
2/6, 2/8, 2/10, 3/0

- 1" thick solid core design
- Maintenance-free vinyl finish provides weather resistance
- Traditional half-screen adjusts for bottom ventilation
- Handle included, black finish

288-SS Value Plus Half Glass and Screen Series



Colour



Brown



White

288-SS

81" Height
2/6, 2/8, 2/10, 3/0

- 1" thick solid core finished with a weather and age resistant surface
- Traditional half-screen design adjusts for on-demand bottom ventilation
- Built to withstand high traffic areas
- Heavy duty weatherstrip system seals out weather
- Handles included, color matched to door

283-ST Traditional Single Vent



Colour



Brown



White

283-ST

81" Height
2/6, 2/8, 3/0

- 1" thickness
- Decorative applied molding adds enhanced curb appeal to traditional half screen storm door.
- Solid core and maintenance-free aluminum finish provides weather resistance.
- Handle included, color matched to door



Pet Storm Doors

Add curb appeal and a way to create your own distinctive look. The full glass with built-in-pet door provides easy access for your pet.



Model 149PV



Handles sold separately

Door Colours



149 PV Elegant Pet Door

- Built-in 8" x 12" pet door accommodates pets up to 40 pounds
- Full glass design allows maximum natural light into home (screen not included)
- Maintenance-free aluminum frame and overlapping edge seal out weather
- Double weatherstrip delivers superior weather protection
- Designer screw covers conceal exterior screws for a finished look
- QuickFit™ handle sets offer multiple handle finishes to choose from



Because you share your heart and your home with your dogs, invite them to expand their independence and enjoy the ease of entering and exiting your home with a Larson storm door with PetSafe pet flap.



Model 370-79

370-79 Large Built-in Pet Door

Let your pet in and keep unwanted critters out with our built-in pet door. These half screen doors combine function and style, letting the light in while letting your dog in and out.

- Built-in pet door has a 10" x 17" flap opening
- Inside pet door security panel keeps intruders out
- Traditional half-screen adjusts for bottom ventilation
- Maintenance-free DuraTech® finish protects against age and weather
- Width size: 32" or 36"
- Height: fits standard door 81"
- Color: White
- Hardware: Included, color matched





2002002

Brisa Retractable Screen Door - single.

Retractable Screen Doors

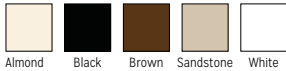
Escape®

- Self adjusting to fit uneven openings
- Low maintenance screen is protected by cassette
- Powder-coated finish is attractive and durable
- 5 year warranty

E100 Single: Width: 20" to 36-1/4" - Height: 78-1/2" to 80-1/2"

E200 Double: Width: 30" to 84" - Height: 79" to 81"
Width: 30" to 96" - Height: 91" to 93"

Colour



Almond Black Brown Sandstone White



Inspire

- Self adjusting to fit uneven openings
- Wheelchair accessible and handicap friendly with flat bottom
- Fully assembled no-cut cassette
- Low maintenance screen is protected by cassette
- Powder-coated finish is attractive and durable
- 5 year warranty

IN100 Single: Width: 39" - Height: 70" to 81"

Custom: Width: 12" to 63" - Height: 24" to 125"

Colour



Brown Sandstone White



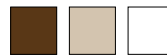
Pleated Design

Brisa

- Cassette on the right or left side of the screen door can be pulled side-to-side or retracted when the screen is not in use
- Subtle strips to prevent walk through
- Limited life time warranty

- Quick snap track requires no cutting
- Handles comes with latch lock to secure the door in place

Colour



Brown Sandstone White



7721 Single Door

Sizes: Width: 32" to 36"
Height: 80", 96"



7722 Double Door

Sizes: Width: 68" to 72"
Height: 80", 96"



7723 Sliding Door

Sizes: Width: 32" to 36"
Height: 80"



Entrada Teak Woodgrain Door. Shown with 16" NoirTek™ Offset Pull, Schlage Encode™ Smart Wifi Deadbolt in Satin Nickel and Ives RL30 Roller Latch.



Hardware Drilling Options

Choose your hardware from any selection of brand or style. Please specify at the time of ordering: single drill, double drill, mortise faceplate option, a modern pull with deadbolt or multi-point hardware. Pulls and multi-point are only available with a fiberglass door.

Option 1:

Single Drill

Ideal for:

Single lever or knob style hardware.

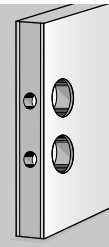


Option 2:

Double Drill

Ideal for:

Handleset, lever or knob with deadbolt hardware.



Option 3:

Multi-point Hardware for Single Door - Fiberglass only

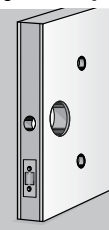
Multiple locking points simultaneously latch into place through the action of a continuous drive rail, providing security to the perimeter of the door.



Option 4:

Deadbolt / Pull Option - Fiberglass only

European styling is achieved with a modern pull and deadbolt combination. The door system includes two architectural grade roller latches.



Residential Hardware

Schlage F-Series Handleset



- Designed to resist a variety of security attacks, including kick-ins, picking, and bumping
- Bottom grip features adjustable throughbolt with 1.5" of movement for flexible install and easy retrofit
- Latch components adjustable for 2-3/8" or 2-3/4" door preps
- Installation is a snap with posts that guide the screw into the proper location



Addison (ADD)
619, 716 (shown)



Camelot (CAM)
619 (shown), 716



Century (CEN)
619 (shown)



Greenwich (GRW)
619 (shown), 622



Plymouth (PLY)
619 (shown), 626



Schlage F-Series Lever and Knobs

- Designed to resist a variety of security attacks, including kick-ins, credit card, picking, and bumping
- Installation is a snap with posts that guide the screw into the proper location
- Fits all standard door preps, with lever designs reversible in-field



Accent Lever (ACC)
Passage, Privacy, Keyed, Dummy (LH/RH)
619, 716 (shown)



Merano Lever (MER)
Passage, Privacy, Keyed, Dummy (LH/RH)
619 (shown)



Broadway Lever (BRW)
Passage, Privacy, Keyed (non-handed)
619 (shown)



Latitude Lever (LAT)
Passage, Privacy, Keyed, Dummy (non-handed)
619, 622 (shown)



Latitude Lever with Century Rose (LAT/CEN)
Passage, Privacy, Keyed
619 (shown)

Available Finishes



619
Satin Nickel



622
Matte Black



626
Satin Chrome



716
Aged Bronze

To view Madero's full offering of Schlage products, visit madero.ca

Residential Hardware

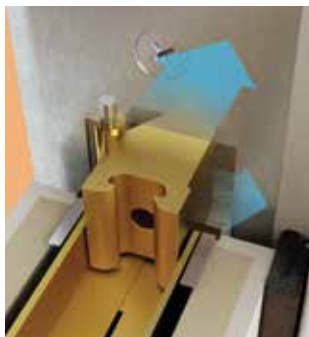
Trilennium® Multi-Point Locking System



Unmatched Strength: Protects with the power of three deadbolts, while the one-piece, solid I-Beam lock construction works to strengthen the door panel.

Unmatched Performance: Bolts pre-engaged when unlocked to fight deflection at all times, and can correct misalignment up to 3/16" in three directions once engaged.

Unmatched Operation: A single turn of the thumbturn or key is all you need to unlock the door. With Panic Release, a single turn of the interior lever unlocks the entire system.



As lock is activated, Trilennium's patented Roller Strikes and Bolts pull the panel into perfect alignment correcting misalignment in three directions.

Trilennium® Handset Collection



Pinnacle Entry Set



Victorian Bronze Satin Nickel Bright Brass



Curved Entry Set



Victorian Bronze Satin Nickel Black



Horizon Entry Set



Victorian Bronze Satin Nickel Bright Brass



Rectangular Entry Set



Victorian Bronze Satin Nickel Black



Eclipse Entry Set



Victorian Bronze Satin Nickel Bright Brass Black



Eclipse Grip Set



Victorian Bronze Satin Nickel Bright Brass Black



Architectural Door Pulls

The Rockwood Collection of architectural hardware is designed with strict attention to detail, from the selection of top-grade materials to application of the finest finishes, resulting in a product of the highest caliber for decades of lasting beauty. All door pull systems are constructed with two architectural grade roller latches. For more options refer to madero.ca

NoirTek™ Collection

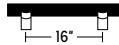
(Straight RM3910 / Offset RM3940)



NoirTek's durable black hard coat anodized grip complements many design schemes.

- 16" CTC x 1-1/4" diameter straight or offset pull
- Black hard coat anodized grip, stainless steel mounts

Available sizes: 16" Offset
16" Straight



MegaTek™ Collection

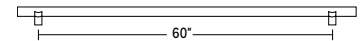
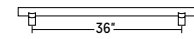
(Offset RM3311)



Ladder pulls are an artful and functional solution for a dramatic entrance design.

- 36" CTC or 60" CTC x 1-1/4" diameter offset pull
- Polished stainless steel

Available sizes: 36" Offset
60" Offset



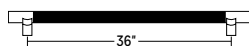
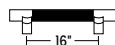
SoftMet™ Collection

(Straight RM2510 / Offset RM2540)



- Durable, weather-resistant black Santoprene™ grip—a high performance engineered thermoplastic elastomer
- 16" CTC x 1-1/4" diameter straight or offset pull or 36" CTC x 1-1/4" diameter offset pull
- Stainless steel ends and mounts

Available sizes: 16" Offset
16" Straight
36" Offset



RegaLead Collection

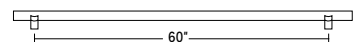
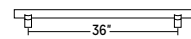
(RM-PB-05)



Stainless steel pull bars are the perfect accessory for contemporary doors.

- 36" CTC or 60" CTC x 1-1/4" diameter offset pull

Available sizes: 36" Offset
60" Offset



Brush Anodized



Matte Black
'Leather'

For more information on Madero's selection of Architectural Door Pulls, visit madero.ca

Locking Hardware Options

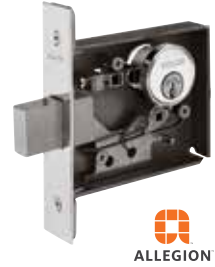
Cylindrical Deadbolt (B60)

- Cylindrical deadlock
- Anti-pick shield protects against hammer and crowbar attacks
- Fits into standard 2-1/8" hole
- Lifetime finish and mechanical guarantee
- Grade 1 - Highest Residential Security Rating
- Finishes: Matte Black, Satin Chrome



High Security Mortise (L460P)

- High security mortise lock
- 3 year limited manufacturer's warranty
- Exceeds Grade 1 testing
- Minimalistic cylinder for architectural or European design
- Solid stainless and brass components
- The best in traditional keyed entry locks
- Finish: Satin Chrome



Roller Latch (RL30)

- Maximum projection of the roller is 3/8" allowing for variance in the door clearance
- Nylon roller standard
- Stainless steel construction
- Adjustable tension
- Finishes: Stainless Steel, Oil Rubbed Bronze



Schlage Encode™ Smart WiFi Deadbolt (BE489 CAM / CEN)

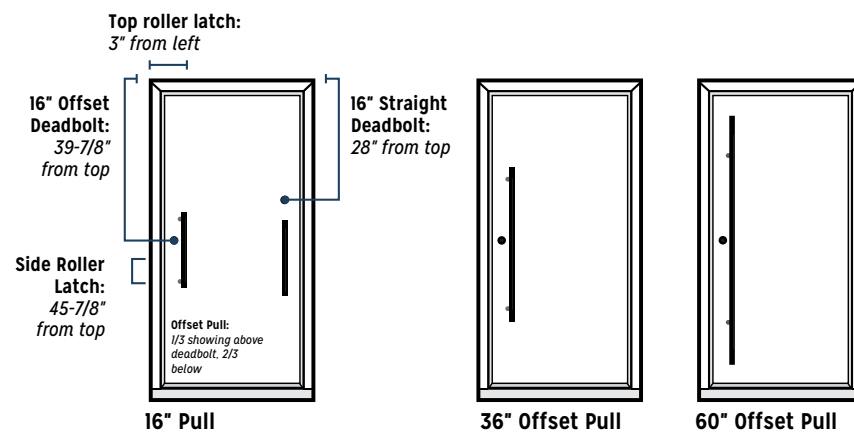
- Built-in WiFi allows you to lock/unlock from anywhere
- Voice commands via Alexa or Google Assistant
- Easy to install
- 3-year limited electronics warranty
- Grade 1 - Highest Residential Security Rating
- Finishes: Satin Nickel, Aged Bronze



Note: Some regions may require a double latching system to meet local building codes. Contact your local building inspector for more information.

Architectural Door Pull Visualizer

Determine Your Desired Product Style



Offset pulls are designed to incorporate a deadbolt along the length of the pull, whereas a straight pull incorporates the deadbolt installation above the pull.

Offset vs. Straight

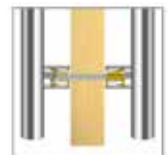
Offset vs. straight is usually determined based on the aesthetics you are hoping to achieve, and the functionality required to ensure you have a product which meets your everyday needs.

Offset pulls are designed to incorporate a deadbolt along the length of the pull, allowing additional clearance when locking/unlocking the deadbolt, whereas a straight pull incorporates the deadbolt installation above the pull.

Back-to-Back Mounting

Two door pulls are connected through the door, each pull opposite the other.

All Madero fiberglass slabs feature a full height lock block for lifelong performance.



Disclaimer: All measurements are calculated from the top left of door slab. Some regions may require specific drill locations for deadlock options. Contact your local building inspector for more information.



A PLACE RESIDE



| Design Your Madero Door



28

Vog 2 steel door with stainless steel decorative elements and direct glazed sidelite with clear glass. Shown with MegaTek 60® Offset Pull and Schlage B60 deadbolt.

Design Your Madero Door

Handcrafted. Refined.

The Artisan Series by Madero is comprised of handcrafted door systems to suit your home. Inswing or outswing? Left hand or right hand? 2/8, 2/10, 3/0 or custom? Jamb depth of 4-9/16, 6-9/16, 8-9/16 or custom? Hardware prep? Choose from the designs in this booklet, from the product selection shown and enjoy the process!

Operating Configurations

Single Door

All doors and glass in this brochure are available in a single door configuration.

Single Door with Sidelites

Sidelites can provide an architectural feature to your home's appearance. Using a full glass sidelite can maximize the light in your entryway. Refer to page 139 for visualization.

Direct Glazed Sidelites & Transoms

Glass extends edge to edge, with no need for a sidelite panel. Direct glazed sidelites and transom provide full unobscured glass coverage. Pair any single door system with one or two direct glazed sidelites and/or transom. Choose from Frosted or Clear Low E glass options.

Sidelite and Transom Glass Options



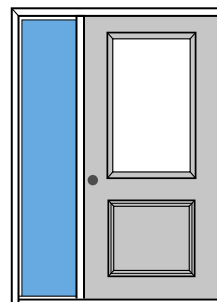
Frosted



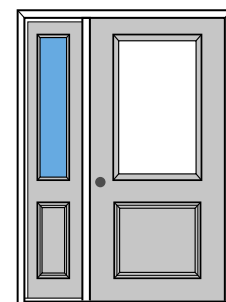
Clear Low E

Panelled Sidelite

Sidelite panels are either fixed into the frame or vented out using a crank mechanism. Glass featured in this brochure is available in 1/2, 3/4 or full sidelite sizing.



Full Glass Direct Glazed Sidelite



Panel Sidelite

Garden Patio Doors

Double or patio doors are featured in three designs. Refer to pages 119-125.

PREMIUM

High Definition Steel Door
Premium Wood Frame

STEELCOMP

High Definition Steel Door
Premium Smooth White
Composite Frame

PLUS

Smooth White
Fiberglass Door
Premium Wood Frame

FIBERCOMP

Smooth White Fiberglass Door
Premium Smooth White
Composite Frame

Entrada

Woodgrain Fiberglass Door
Premium Woodgrain
Composite Frame



| Garden Patio Doors

Madero Garden Patio Doors offer three select choices for your new construction or renovation project. All types are offered in a variety of sizes to fit your project.



Single Hinged Garden Patio Doors

One Door Active | One Door Fixed

Ideal for accommodating multiple doors – creating a spectacular view

One door is fixed while the other opens as an active door. Fixed doors create the illusion of a full lite sidelite, allowing additional sunlight to fill your room and provide a full view of the outdoors. Additional fixed panels can be added, to a maximum of four.

Shown as LH Inswing



Double Hinged Garden Patio Doors

One Door Active | One Door Inactive

Full clearance double door system – provides the beauty of a garden patio door with full access to the outdoors

Complete with a multi-point astragal, this product allows the inactive door to be securely locked and sealed or active as required. Active door must be double drilled.

Shown as Outswing



Garden Venting Patio Doors

One Door Active | One Door Venting

Designed to provide easy access to outdoor living spaces – as well as ventilation and natural light

These garden doors feature the active door as a typical swing door with optional sash lock. Specify single or double drilling. The venting door is complete with standard screen, roto hardware, and sash locks with tie bar.

Available as 6/8 Outswing only

Refer to madero.ca to view Garden Patio Door brochure.



This SteelComp door system is single hinged and features Clear Low E glass.

Single Hinged Garden Patio Doors

One Door Active | One Door Fixed

Ideal for accommodating multiple doors – creating a spectacular view

Maximum View & Full Sunlight

One door is fixed while the other opens as an active door. Fixed doors create the illusion of a full lite sidelite, allowing additional sunlight in to fill your room and provide a full view of the outdoors. Select your configuration; inswing or outswing, left or right handed. Additional fixed panels can be added, to a maximum of four.

Inswing - 6/8 or 8/0 Option



4 9/16" Jamb 1.4 - GP 4 RHINPOST AF
6 9/16" Jamb 1.6 - GP 6 RHINPOST AF



4 9/16" Jamb 2.4 - GP 4 LHINPOST FA
6 9/16" Jamb 2.6 - GP 6 LHINPOST FA



4 9/16" Jamb 3.4 - GP 4 LH IN AF
6 9/16" Jamb 3.6 - GP 6 LH IN AF



4 9/16" Jamb 4.4 - GP 4 RH IN FA
6 9/16" Jamb 4.6 - GP 6 RH IN FA

Outswing - 6/8 or 8/0 Option



4 9/16" Jamb 7.4 - GP 4RO POST AF
6 9/16" Jamb 7.6 - GP 6RO POST AF



4 9/16" Jamb 8.4 - GP 4LO POST FA
6 9/16" Jamb 8.6 - GP 6LO POST FA



4 9/16" Jamb 9.4 - GP 4LO AF
6 9/16" Jamb 9.6 - GP 6LO AF



4 9/16" Jamb 10.4 - GP 4RO FA
6 9/16" Jamb 10.6 - GP 6RO FA



Double hinged with added fixed panels are shown in this Premium system.

Double Hinged Garden Patio Doors

One Door Active | One Door Inactive

Full clearance double door system –provides the beauty of a garden patio door with full access to the outdoors

Secure Performance For Your Door System

Complete with multi-point astragal, the two additional locking points provide multi-point performance without requiring the added purchase of additional hardware. This product allows the inactive door to be securely locked and sealed, or active as required. Active door must be double drilled. Select your configuration; inswing or outswing, left or right handed. Steel or smooth white fiberglass systems will have a white astragal, textured woodgrain will have a bronze astragal.

NOTE: Astragals will not accept paint or stain

Inswing - 6/8 or 8/0 Option



4 9/16" Jamb 5.4 W - GP 4 WHT LHIN 6/8 AA
6 9/16" Jamb 5.6 W - GP 6 WHT LHIN 6/8 AA



4 9/16" Jamb 6.4 W - GP 4 WHT RHIN 6/8 AA
6 9/16" Jamb 6.6 W - GP 6 WHT RHIN 6/8 AA

Outswing - 6/8 or 8/0 Option



4 9/16" Jamb 11.4 W - GP 4LO WHT 6/8 AA
6 9/16" Jamb 11.6 W - GP 6LO WHT 6/8 AA



4 9/16" Jamb 12.4 W - GP 4RO WHT 6/8 AA
6 9/16" Jamb 12.6 W - GP 6RO WHT 6/8 AA

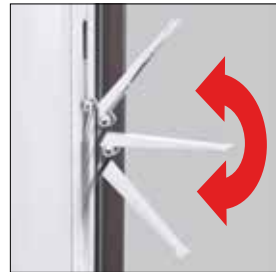
Ultimate Multi-Point Astragal



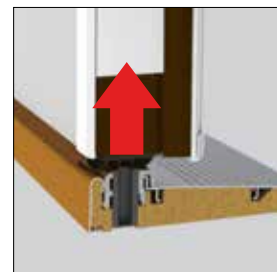
Engaging a standard deadbolt activates built-in locking mechanism



Built-in Lock Pawls engage with keepers in the active door



Flip Lever locks and unlocks the astragal in one easy motion



Flush Bolt and Floating Boot lift clear of the sill for damage free operation



Making a statement, this venting garden patio unit is a woodgrain fiberglass Entrada system. Factory pre-finished with chestnut stain and Schlage keypad deadbolt with handleset in Aged Bronze finish and Camelot trim.

Garden Venting Garden Patio Doors

One Door Active | One Door Venting

Designed to provide easy access to outdoor living spaces – as well as ventilation and natural light.

Let In A Burst of Fresh Air

Garden venting doors feature the active door as a typical swing door (outswing only) with optional sash lock. Product comes complete with standard screen mounted to the inside of the venting door, roto hardware, and sash locks with tie bar. Select left or right handed configuration and specify single or double drill. Steel and smooth white fiberglass default hardware is white (unless specified), textured woodgrain default hardware is bronze (unless specified).

Clips open for access to exterior of window for easier cleaning



Screen & Roto Truth Hardware allow the venting side to open for maximum air circulation



Sash Locks & Tie Bar Locking System provide both extra security, and a weatherseal fit



Sand



Coppertone



Black



White



Brushed Chrome



Bronze

Outswing - 6/8 only



4 9/16" Jamb **9.4** - GP 4LO WHT ACT-VENT
6 9/16" Jamb **9.6** - GP 6LO WHT ACT-VENT



4 9/16" Jamb **10.4** - GP 4RO WHT VENT-ACT
6 9/16" Jamb **10.6** - GP 6RO WHT VENT-ACT

* Rectangular transoms are available for all units, with clear dual Low E or 5 lite internal white grille option

This hardware meets or exceeds the maximum performance requirements that are sought in today's market of larger venting doors. Truth Hardware has been long recognized for its vast array of quality finishes and its ability to provide the most attractive, easiest operating and highest performing window hardware.

Madero Garden Patio Doors include Truth Hardware operators with standard collapsible handles to avoid interference with blinds.

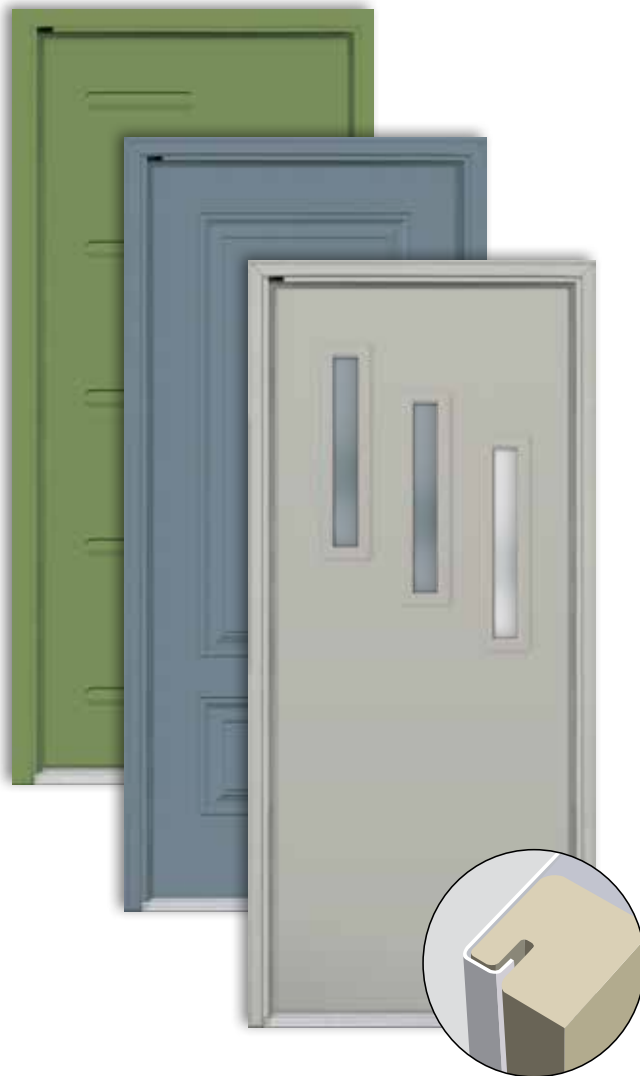


Steel Doors

Steel doors have been the choice for residential usage for over 50 years. The variety of new panelled designs have maintained the popularity of the steel door.

10 YEAR
Limited
Manufacturer's
Warranty

Novatech[®]



PREMIUM^M
High Definition Steel Door
Premium Wood Frame

STEELCOMP^M
High Definition Steel Door
Premium Smooth White
Composite Frame

Finish with Ease

Artisan doors are supplied with a N600 Polytex finish, requiring no additional paint to achieve a 10 year limited warranty. Doors can easily be painted to match the style of your home - consider factory pre-finishing for your door and frame.



Polytex white is cool white while Madero's composite frames are warm white. To achieve a uniform appearance, painting will be required.

Refer to page 133 for factory finish information.

Durability

24 gauge door skins interlock with the stile, providing additional support to reduce delamination and stretching. Steel door skins will not crack or warp, unlike wood.

Strength

A 16" wood lock block provides additional strength and structure to support most residential hardware. We do not recommend multi point or pulls with a N600 door.

Energy Efficiency

Filled with an insulating core of 100% CFC free polyurethane foam, providing a superior energy rating over a standard styrene core product.

Frame Options for Door Glass

Traditional or Contemporary frames are available as per the design of the glass.

Cost

Steel entry doors are more affordable compared to wood or fiberglass.

Fire Rated Door System

Most designs are available in a 20 minute Fire Rated System.



4 Lite with Frosted glass, painted Tangerine. Shown with 16" straight NoirTek™ pull, Schlage Sense™ Deadbolt .

Fiberglass Doors

Built for the Canadian Climate

In 2005, Madero partnered with NanYa Plastics, a world leader in the manufacturing of fiberglass, working with Canadian R & D Corp. to develop a maintenance free door and frame system, which meets the climate conditions found within the Canadian market.

25 YEAR
Limited
Manufacturers
Warranty



PLUS^M
Smooth White
Fiberglass Door
Premium Wood Frame

FIBERCOMP^M
Smooth White Fiberglass Door
Premium Smooth White
Composite Frame

Entrada^M
Woodgrain Fiberglass Door
Premium Woodgrain
Composite Frame

Finish with Ease

Smooth white fiberglass doors are supplied in their natural pre-pigmented warm white finish. Though painting is not required to achieve a full 25 year limited warranty, doors can easily be painted to the color of your choosing.



Brushed fiberglass is supplied warm white, but can be painted or stained to achieve an exceptionally beautiful appearance.

Woodgrain fiberglass doors are supplied with factory almond finish, requiring paint or stain to achieve a realistic, rich appearance. Refer to page 133 for factory finish information.

Durability & Performance

Fiberglass skins are resistant to dents, dings, splintering and corrosion. The rigid structure of our fiberglass doors prevent bowing and warping in extreme temperatures.

Exceptional Security

The full length steel reinforced wood lock block offers a high level of security, while allowing a range of hardware mounting options.

Completely Waterproof

Waterproof composite stiles and rails are sealed and finished to protect all edges of the door from moisture penetration, which can harm the inner insulation and cause rotting.

Energy Efficiency

Filled with an insulating core of 100% CFC free polyurethane foam, providing an excellent R rating, while bonding the two door skins together for additional strength.

Frame Options for Door Glass

Traditional or Contemporary frames are available as per the design of the glass. Flush glazing adds a level of sophistication. Available designs are as noted.

Fire Rated Door System

Several designs are available in a 20 minute Fire Rated System. Refer to madero.ca.

Artisan Door Frame

All Madero's Artisan door frame systems are constructed of either wood, wood with Framesaver® or composite jamb and brickmould. Available in 4-9/16", 6-9/16", 8-9/16" or custom jamb depth.

Units are complete with factory installed 2" step brickmould profile. Slimline aluminum brickmould is optional and available in black or white. To satisfy existing masonry or stucco, ask about custom brickmould options.



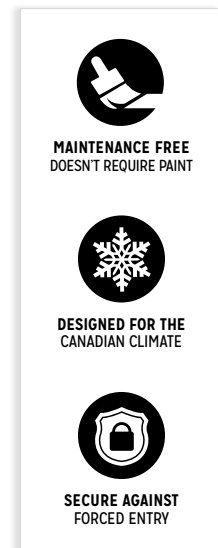
Jamb Options

Composite

- Woodgrain textured or pre-pigmented smooth white frame components are a blend of PVC and wood fiber composite substrate.
- Composite will not discolour, absorb moisture, splinter or rot.
- Smooth white composite does not require paint while woodgrain composite is supplied in its raw almond finish, requiring paint or stain to achieve a realistic, rich appearance.
- Limited life time warranty.

Wood

Kiln dried, primed finger-joint pine—double primed for quality performance and ease of painting. Wood frame requires paint on all exposed surfaces within 45 days of purchase.



Framesaver® Rot-Proof Wood Door Frames

- Never absorbs water, never rots, cracks or warps.
- Lifetime warranty.
- Finishes and paints like wood.
- Finger-jointed construction enhances strength of frame.



SnapLock Nailing Fin (Composite only)

Incorporating a hinge-style design, Madero's SnapLock nailing fin snaps into place for new home construction or can be scored and trimmed if not required.

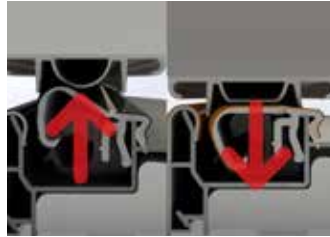


Artisan Door Frame

Z-Series Articulating Cap Sill® and Sealing System

- Superior Performance

Z-AC cap sill never needs adjustment, automatically adjusting for a lasting seal against leak and air infiltration.



- Sealing System

Gaskets are provided to give an additional seal and to eliminate caulking. Matching corner pads are factory installed to seal out air and moisture. Compression weatherstrip seals tight when the door is closed and expands when open. The Z-AC door bottom is adhered to the door forming a tight seal every time.

- Additional Protection

Sills are provided with sill and cap covers to prevent damage during installation.



Z-Series Articulating Cap Sill®

Madero Artisan door systems are provided with black caps and black anodized sill decks.



CERTIFIED & TESTED

To meet the stringent NAFS requirements for doors in a new home construction, all Endura door components are certified and tested.

Z-AC Door Bottom

The Z-AC Door Bottom delivers enhanced protection against air and water infiltration, forming a tight seal every time. Z-AC Door Bottoms seal without caulk for easy assembly and lasting performance.



Simple Solutions® Corner Pad Weatherstripping

Small in size but big in impact. The Simple Solution Corner Pad seals out air and moisture.

Compression weatherstrip seals tight when the door is closed and expands when opened, providing a long-lasting weather tight solution.





Soho steel doors feature shaker panelling. This double hinged Garden Patio door system features one active and one inactive door with multi-point astragal. Painted in Buttercup.

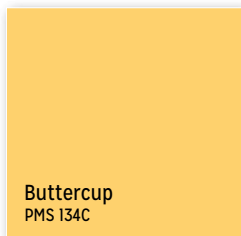
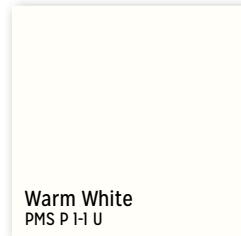
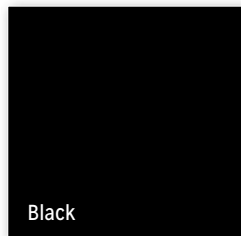
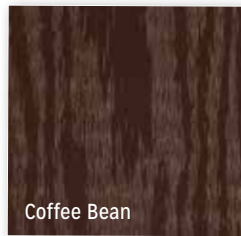
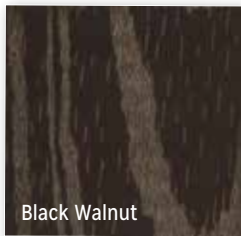
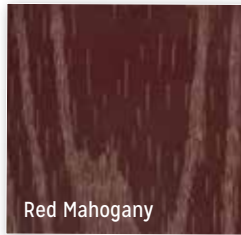
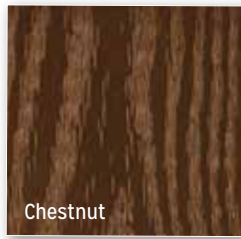
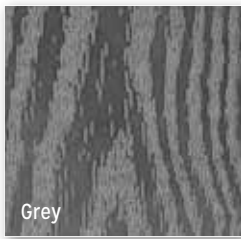


Pre-Finishing Options

Madero has identified and selected some of the most popular paint and stain colours. Streamline the colour matching process for your project by selecting from Madero's popular colour choices.

Doors left manufacturer white will have varying shades of white due to the natural products used.

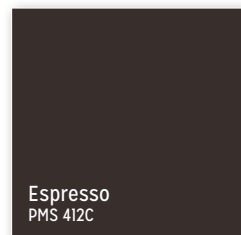
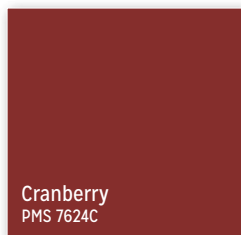
Contact your supplier for more details. Pre-finishing colours are displayed with corresponding Pantone Matching System® (PMS) codes for ease of reference.



Printed swatch colours may vary slightly from actual product. If you are concerned about exact colour match, we recommend you first request a product sample for accuracy.

Option to paint one side is available. Specify at time of ordering. Split finish option also available.

Choose stain or paint for textured and brushed fiberglass. Choose paint for steel or smooth fiberglass.







Madero Exterior Doors are manufactured in Western Canada and can be purchased through our dealer network. Madero is a leader in the use of fiberglass and steel doors in wood or composite frames. We fabricate several lines of door systems, with quality craftsmanship being our focus for every door we build.

Measuring Your Garden Patio Door

Product Availability Chart

6/8 - Standard Frame Glass Insert (ED00, SG00, WG00)

	2/6	2/8	2/10	3/0	5/0	6/0
Premium	✓	✓	✓	✓	✓	✓
SteelComp	✓	✓	✓	✓	✓	✓
Plus	✓	✓	✓	✓	✗	✗
FiberComp	✓	✓	✓	✓	✗	✗
Entrada	✓	✓	✓	✓	✗	✗

8/0 - Standard Frame Glass Insert (SG00, WG00)

	2/6	2/8	2/10	3/0
Premium	✗	✗	✗	✗
SteelComp	✗	✗	✗	✗
Plus	✗	✗	✗	✗
FiberComp	✓	✓	✓	✓
Entrada	✓	✓	✓	✓

6/8 - Flush Glazed Fiberglass Only (SG12, WG12)

	2/6	2/8	2/10	3/0
Premium	✗	✗	✗	✗
SteelComp	✗	✗	✗	✗
Plus	✓	✓	✓	✓
FiberComp	✓	✓	✓	✓
Entrada	✓	✓	✓	✓

8/0 - Flush Glazed Fiberglass Only (SG12, WG12)

	2/6	2/8	2/10	3/0
Premium	✗	✗	✗	✗
SteelComp	✗	✗	✗	✗
Plus	✗	✗	✗	✗
FiberComp	✓	✓	✓	✓
Entrada	✓	✓	✓	✓

Finished Frame Widths

Single Hinged	Net Frame Width	Double Hinged	Net Frame Width
2/6 + 2/6	63"	2/6 + 2/6	62 1/4"
2/8 + 2/8	67"	2/8 + 2/8	66 1/4"
2/10 + 2/10	71"	2/10 + 2/10	70 1/4"
3/0 + 3/0	75"	3/0 + 3/0	74 1/4"

Garden Venting	Net Frame Width	Garden Renovator*	Net Frame Width
2/6 + 2/6	63"	5/0	59" X 79 1/4"
2/8 + 2/8	67"	6/0	71" x 79 1/4"
2/10 + 2/10	71"		
3/0 + 3/0	75"		

* Steel door only

Finished Frame Heights

Inswing	Net Frame Height	Outswing	Net Frame Height
6/8	81-3/4"	6/8	80-3/4"
8/0	97-3/4"	8/0	96-3/4"

Rough Opening Measurements

To calculate rough opening, add 1" to width and add 1/2" to height of net frame. For transom, add 15 3/4" to height of net frame.

Brickmould Outside Measurements (OSM)

To calculate the outside measurement of brickmould, add 2 1/2" to width and add 1 1/4" to height of net frame.

CHECKLIST FOR GARDEN PATIO SYSTEMS

Many details come together to create the perfect Garden Patio door system. Follow this important checklist to ensure your order is complete and the end result is exactly as you imagined.



step 1
Choose Your System

STEEL DOORS

PREMIUM ^M

High Definition Steel Door
Premium Wood Frame

PREM

STEELCOMP ^M

High Definition Steel Door
Premium Smooth White Composite Frame

STC

FIBERGLASS DOORS

PLUS ^M

Smooth White Fiberglass Door
Premium Wood Frame

PLUS

FIBERCOMP ^M

Smooth White Fiberglass Door
Premium Smooth White Composite Frame

FC

Entrada ^M

Woodgrain Fiberglass Door
Premium Woodgrain Composite Frame

EN

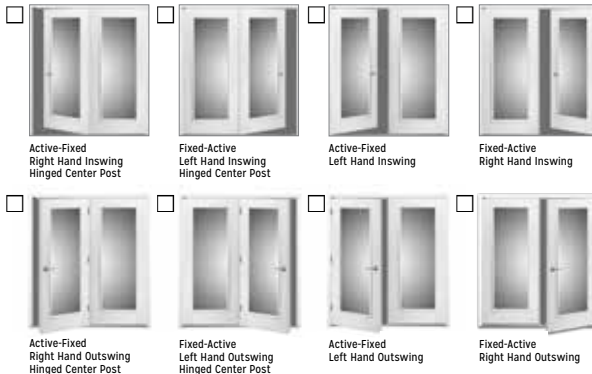
Reference Your Door Design:

Artisan 2020 Brochure Page # _____ Door Design: _____

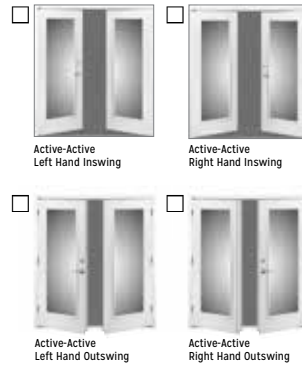
step 2
Choose Your Configuration Options

Choose garden patio door system configuration:

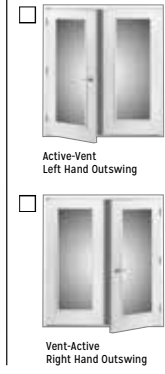
Single Hinged Options:



Double Hinged Options:



Venting:



step 3
Choose Your Glass

Choose door lite glass:

Clear Dual Low-E Clear Triple Low-E Enclosed Mini Blind

White Grille: 9 Lite 10/12 Lite 15/18 Lite Other _____

If transom required:

Clear Dual Low-E
 5 Lite Internal White Grille

step 4
Door Specifications

Choose door size: (Refer to product availability chart, page 136)

Width: 2/6 - 2/6 (63") 2/8 - 2/8 (67") 2/10 - 2/10 (71") 3/0 - 3/0 (75")
 Renovator 5/0 (59") Renovator 6/0 (71")

Height: 6/8
 8/0

Choose jamb depth:

4-9/16" 6-9/16" 8-9/16" Other _____

Choose Brickmould: (Default 180 step)

Attached Loose Other _____

Add Framesaver®: (Premium or Plus only)

step 5
Choose Your Hardware

Specify your hinge finish:



Choose desired hardware drilling prep:

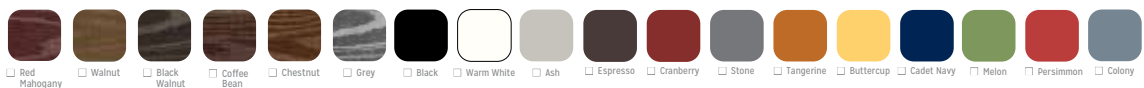
ACTIVE DOOR SD (Single Drill) DD (Double Drill)

INACTIVE DOOR Blank Single Drill (No Edge Bore) Double Drill (no edge bore)

step 6
Choose Your Pre-Finish

Stain Options: (For textured fiberglass only)

Paint Options:



Customer Signature: _____ Date: _____

Store Name or #: _____ Tag: _____ PO #: _____


While Madero makes every effort to ensure the information contained in this brochure is accurate, we do not accept liability for any inaccuracies. This brochure is subject to change, as well as errors and omissions, without notice or liability. Doors are provided unfinished/unstained and without hardware unless otherwise noted. All photos are for illustration purposes only and depicted doors and frames may not represent Madero products.

Product Measurements


Finished Frame Widths

Artisan Series doors are available in 2/8, 2/10, 3/0, and 3/6 widths—as noted in design specifications—with 2x4 (4 9/16"), 2x6 (6 9/16"), 2x8 (8 9/16") or custom, jamb construction, left hand or right hand application, and inswing or outswing. **Door dimensions are based on a 14" height rectangular transom and a 12" or 14" sidelite.**


SINGLE DOOR (D) UNIT SIZING

	Net Frame Width	
	2/8	33 1/2"
	2/10	35 1/2"
	3/0	37 1/2"
	3/6	43 1/2"

SIDELITE-DOOR (SD) UNIT SIZING

	Net Frame Door with 12" Sidelite		Net Frame Door with 14" Sidelite	
	2/8	46 7/8"	2/8	48 7/8"
	2/10	48 7/8"	2/10	50 7/8"
	3/0	50 7/8"	3/0	52 7/8"
	3/6	56 7/8"	3/6	58 7/8"

SIDELITE-DOOR-SIDELITE (SDS) UNIT SIZING

	Net Frame Door with 2 - 12" Sidelites		Net Frame Door with 2 - 14" Sidelites	
	2/8	60"	2/8	64"
	2/10	62"	2/10	66"
	3/0	64"	3/0	68"
	3/6	70"	3/6	74"

Finished Frame Heights (all systems)

6/8 Inswing – Finished Frame Height: 82"

6/8 Outswing – Finished Frame Height: 81"

8/0 Inswing – Finished Frame Height: 98"

8/0 Outswing – Finished Frame Height: 97"

Rough Opening Measurements

To calculate rough opening, add 1" to width and add 1/2" to height of net frame.

Rough Opening Measurements to Include Transom

For all transoms, add 15 3/4" to height of net frame.

For decorative transoms, add 3/4" to width.

OSM Brickmould

To calculate the outside measurement of the brickmould, add 2 1/2" to width and add 1 1/4" to height of net frame.



Inswing - Right Hand
View from outside of home.



Outswing - Right Hand
View from outside of home.

CHECKLIST FOR SINGLE DOOR & SIDELITE SYSTEMS

step 1 Choose Your System

STEEL DOORS

PREMIUM ^M

High Definition Steel Door
Premium Wood Frame

PREM

STEELCOMP ^M

High Definition Steel Door
Premium Smooth White Composite Frame

STC

FIBERGLASS DOORS

PLUS ^M

Smooth White Fiberglass Door
Premium Wood Frame

PLUS

FIBERCOMP ^M

Smooth White Fiberglass Door
Premium Smooth White Composite Frame

FC

Entrada ^M

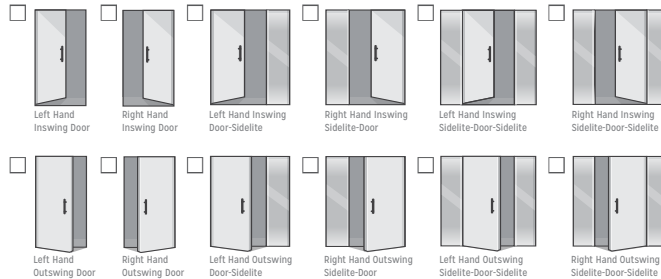
Woodgrain Fiberglass Door
Premium Woodgrain Composite Frame

EN

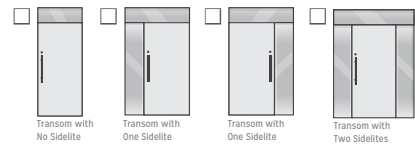
Reference Your Door Design:

Artisan 2020 Brochure Page # _____ Door Design: _____

step 2 Choose Your Configuration Options



Transom



step 3 Choose Your Glass

DOOR GLASS: Please Specify _____

SIDELITE GLASS: Direct Glazed Clear Low-E Frosted
Sidelite Panel Please Specify _____

TRANSOM GLASS: Clear Low-E

step 4 Door Specifications

Choose Door Size: Width: 2/8 (32") 2/10 (34") 3/0 (36") 3/6 (42") | **Height:** 6/8 (80") 8/0 (96") select designs only

Choose Jamb Depth:

4-9/16" 6-9/16" 8-9/16" Other _____

Choose Brickmould: (Default 180 step)

Attached Loose Other _____

Add Framesaver®: (Premium or Plus only)

step 5 Choose Your Hardware Preparation



Single Drill
Ideal for:
Single lever or knob style hardware.



Double Drill
Ideal for:
Handleset, lever or knob with deadbolt hardware.



Deadbolt / Pull Option
European styling is achieved with a modern pull and deadbolt combination. Includes two architectural grade roller latches.



Multi-Point
Multi-point hardware is designed to lock at several points throughout the height of the door, making the lock side of the door as secure as the hinge side.

Hinge Finishes



C-26 Zinc Plated



C-4 Brushed Brass



C-10B Oil Rubbed Bronze



C-26D Brushed Chrome



C-1D Matte Black

MULTI-POINT:

Design: _____ Finish: _____

step 6 Choose Your Pre-Finish

Stain Options



Red Mahogany



Walnut



Black Walnut



Coffee Bean



Chestnut



Grey



Black

Paint Options



Warm White



Ash



Espresso



Cranberry



Stone



Tangerine



Buttercup



Cadet Navy



Melon



Parsimon



Colony

Customer Signature: _____ Date: _____

Store Name or #: _____ Tag: _____ PO #: _____

While Madero makes every effort to ensure the information contained in this brochure is accurate, we do not accept liability for any inaccuracies. This brochure is subject to change, as well as errors and omissions, without notice or liability. Doors are provided unfinished/unstained and without hardware unless otherwise noted. All photos are for illustration purposes only and depicted doors and frames may not represent Madero products.



Looking for a high quality, complete door and hardware package for your home? Madero offers a wide array of door designs and configurations with highly customizable glass and hardware options suitable for both interior and exterior applications.



Entry Series



Designer Entry Series



Garden Patio Door Series



Multi-Family





Commercial



Interior Doors

Contact us at:
madero.ca | 1.800.667.6977

  @maderocanada

Brochure design by

